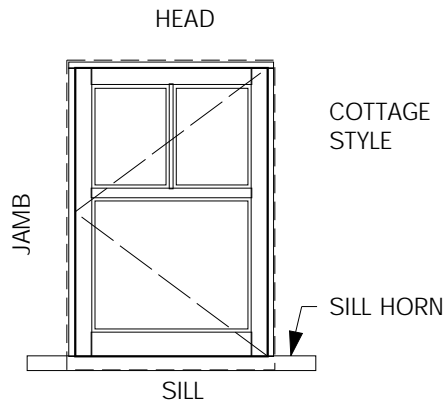




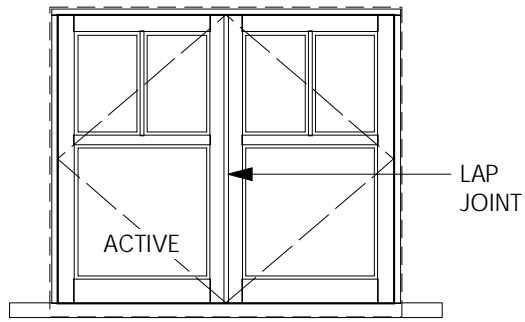
STANDARD DETAILS

SHEET INDEX

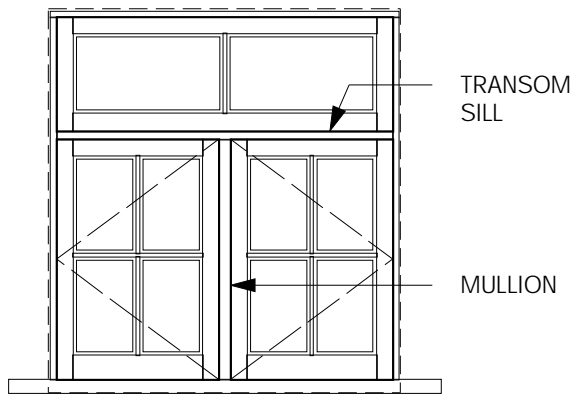
<u>SHEET</u>	<u>WINDOW TYPE</u>
1.01	ELEVATIONS, HINGED
1.02	ELEVATIONS, DBL/SGL HUNG, SLIDER
1.03	ELEVATIONS, FIXED
	Ø HINGED, SIMPLE
2.01-2.04	CASEMENT (CS), PAIR (CP), TRIPLE (CT) SIM
2.05-2.06	AWNING (AW)
2.07-2.08	HOPPER (HP)
2.09-2.10	CASEMENT INSWING (CI)
	Ø HINGED W/ SCREENS
2.11-2.12	CS W/ CRANKS & SCREEN (AW) SIM
2.13-2.14	CS W/ ROLL SCREEN
2.15-2.16	CS W/ ROLL SCREEN CONCEALED
	Ø DBL HUNG / SLIDER
2.17-2.19	DOUBLE HUNG (DH), (SH) SIM
2.20-2.21	SLIDER (SL)
	Ø FIXED
2.22-2.23	FIXED SASH (FX)
2.24-2.25	DIRECT GLAZED (DG)
	Ø OTHER DETAILS
2.41-2.42	STICKING PROFILES
2.51	WINDOW STOOL PROFILES
	GLOSSARY
	ABBREVIATIONS
	SAMPLE WINDOW SPECIFICATIONS



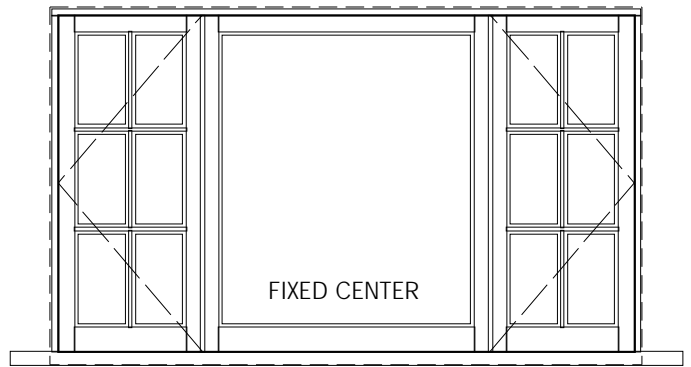
CASEMENT (CS)
LH



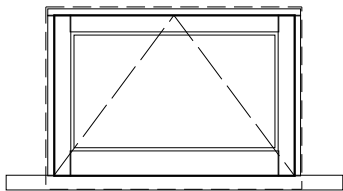
CASEMENT PR (CP)
LH



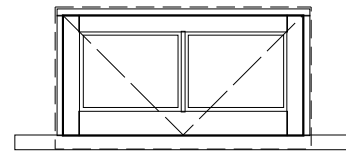
DBL CASEMENT



CASEMENT TRIPLE (CT)



AWNING (AW)




HOPPER (HP)

FO - FINISH OPENING (SASH SIZE)
 OD - OUTSIDE FRAME DIMENSION
 RO - ROUGH OPENING
 (T) - SAFETY GLASS
 TYP - TYPICAL
 UON - UNLESS OTHERWISE NOTED

 - CALLOUT SIZE (BOXED)

HINGED WINDOWS

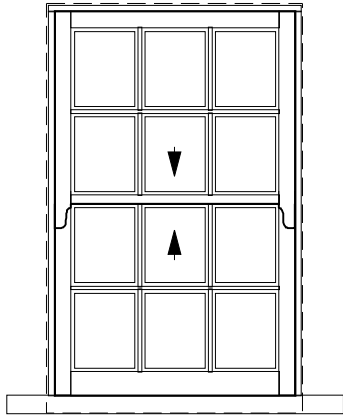
----- SHORT DASHED LINE INDICATES BY OTHERS

SAMPLE EXTERIOR ELEVATIONS	1/2" = 1'-0"		7/14/04
STANDARD DETAILS		APPROVED	SHEET 1.01

DATE

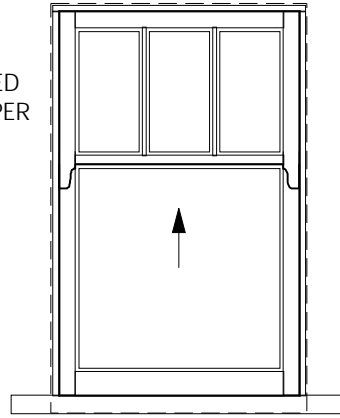
SHEET

1.01



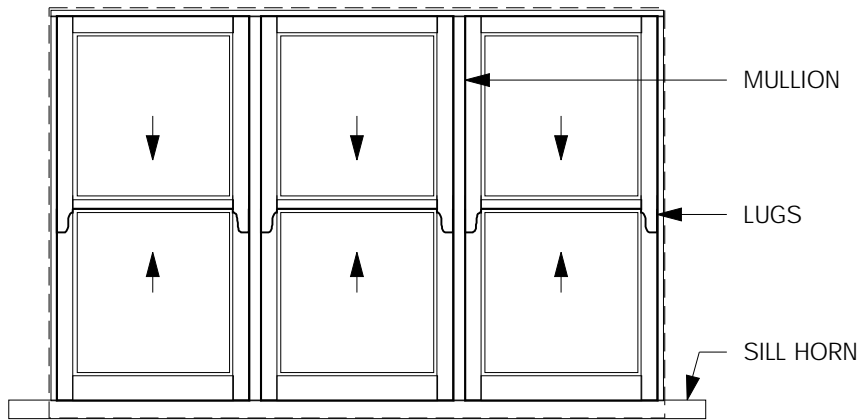
DOUBLE HUNG (DH)

FIXED UPPER

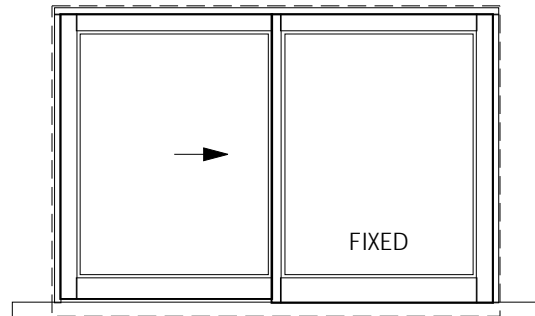


SINGLE HUNG (SH)

COTTAGE
STYLE




DH X 3 GANG



SLIDER (SL)

HUNG / SLIDER WINDOWS

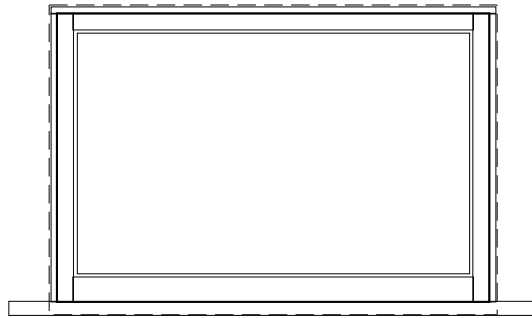
----- SHORT DASHED LINE INDICATES BY OTHERS

SAMPLE EXTERIOR ELEVATIONS	1/2" = 1'-0"		7/14/04
STANDARD DETAILS		APPROVED	SHEET 1.02

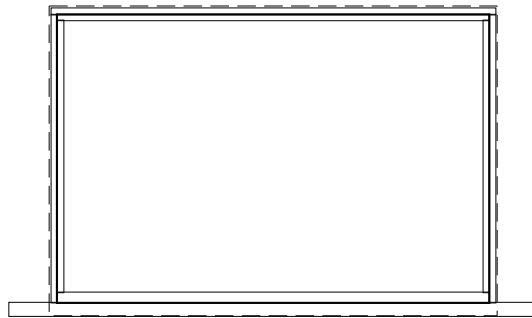
DATE

SHEET

1.02




FIXED SASH (FX)



DIRECT GLAZED (DG)

FIXED WINDOWS

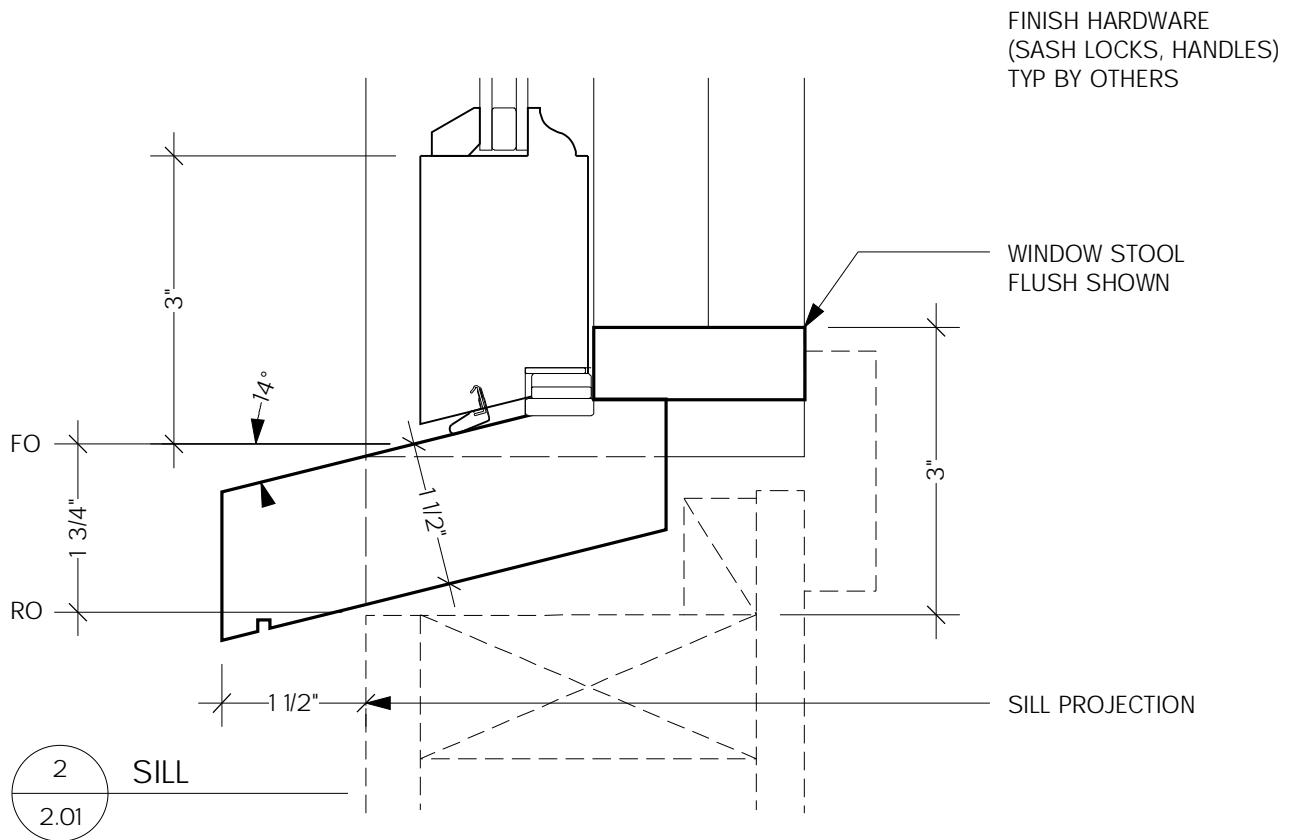
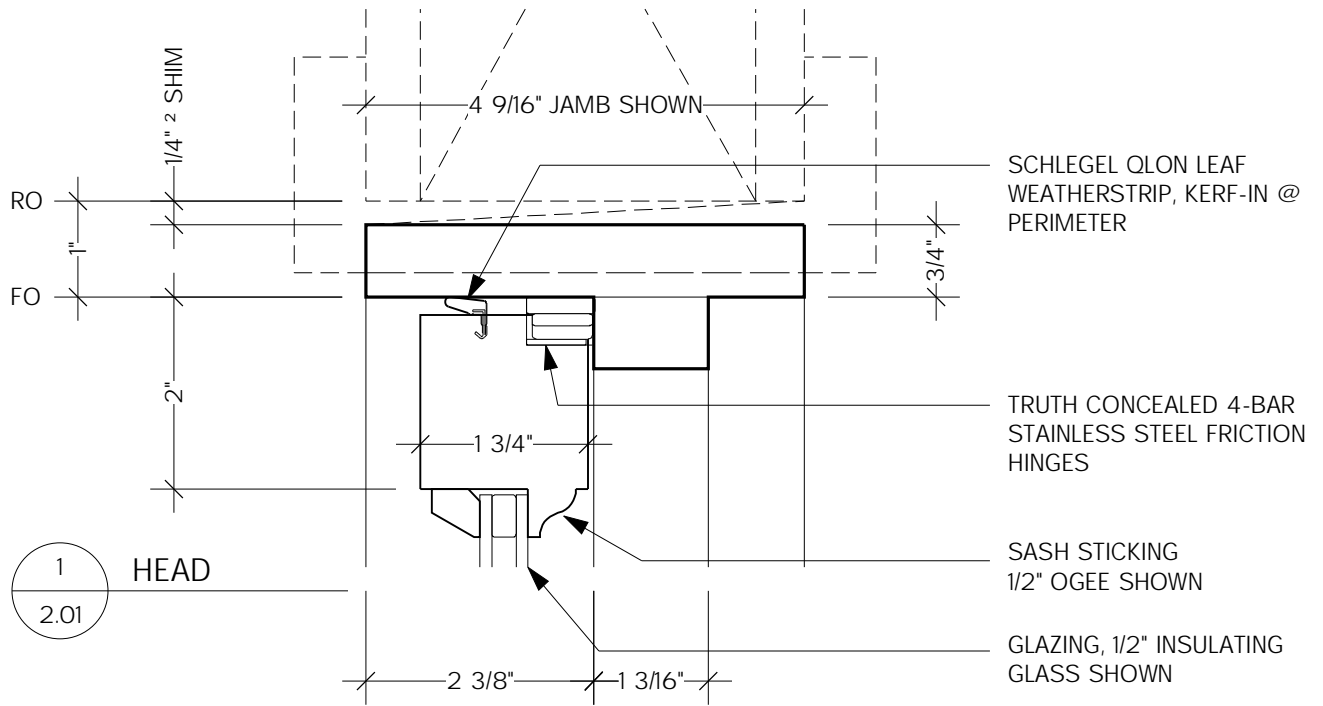
----- SHORT DASHED LINE INDICATES BY OTHERS

SAMPLE EXTERIOR ELEVATIONS	1/2" = 1'-0"		7/14/04
STANDARD DETAILS		APPROVED	SHEET 1.03

DATE

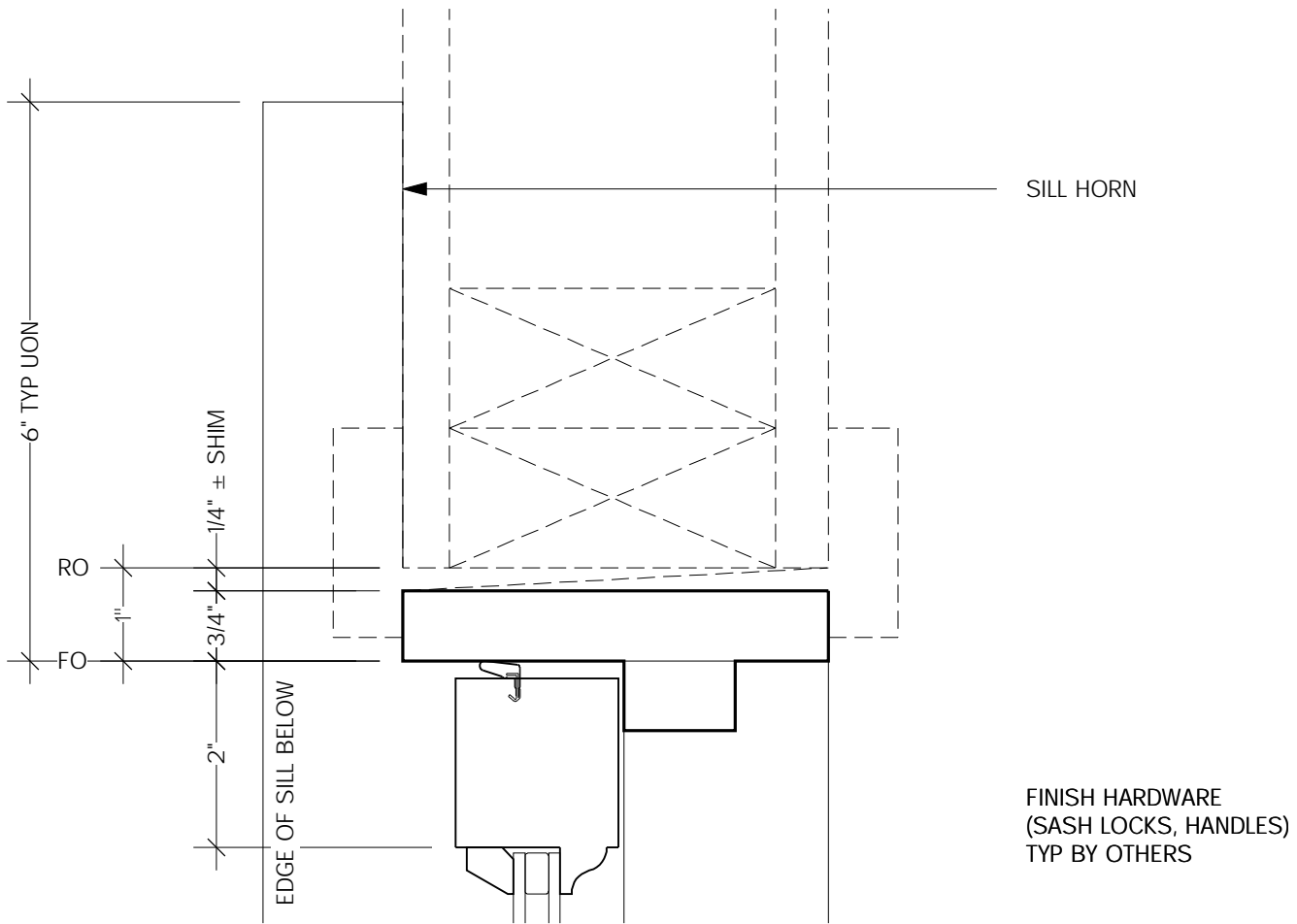
SHEET

1.03



----- SHORT DASHED LINE INDICATES BY OTHERS

HINGED, CASEMENT (CS)	1/2 FULL SIZE		7/14/04
STANDARD DETAILS	SEBASTOPOL WINDOW COMPANY	APPROVED	SHEET 2.01



1
2.02

JAMB

----- SHORT DASHED LINE INDICATES BY OTHERS

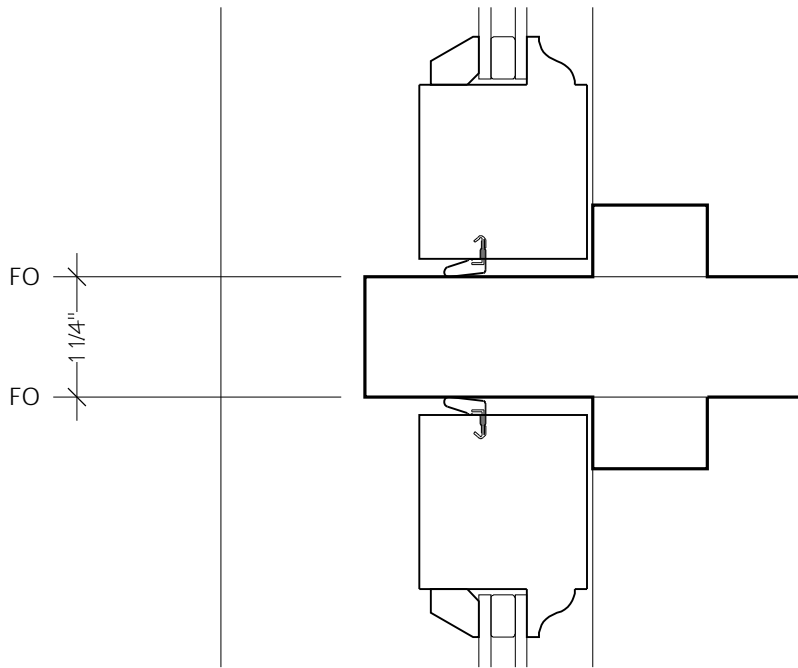
HINGED, CASEMENT (CS)	1/2 FULL SIZE		7/14/04
STANDARD DETAILS		APPROVED	SHEET 2.02

DATE

SHEET

2.02

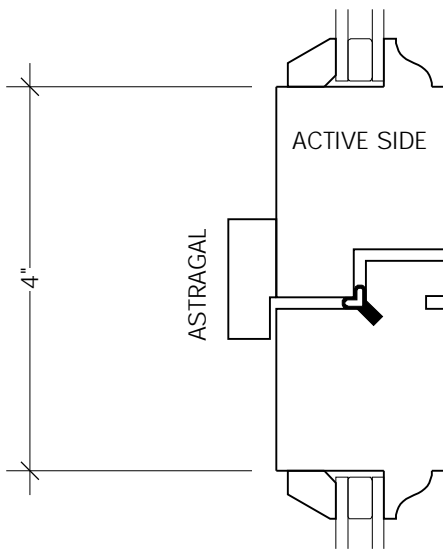
StdetWEB.mcd



1
2.03

MULLION

FINISH HARDWARE
(SASH LOCKS, HANDLES)
TYP BY OTHERS



2
2.03

MEETING STILES
(FRENCH CASEMENT)

----- SHORT DASHED LINE INDICATES BY OTHERS

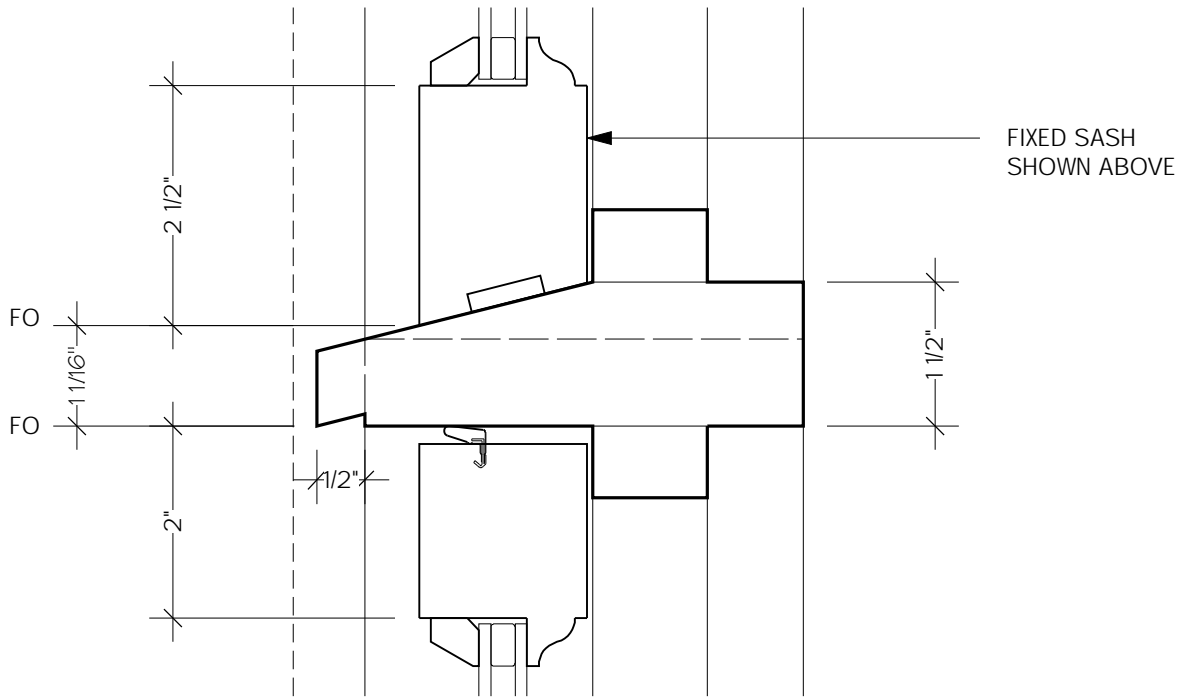
HINGED, CASEMENT (CS)	1/2 FULL SIZE		7/14/04
STANDARD DETAILS		APPROVED	SHEET 2.03

DATE

SHEET

2.03

StdetWEB.mcd



1 TRANSOM SILL
2.04

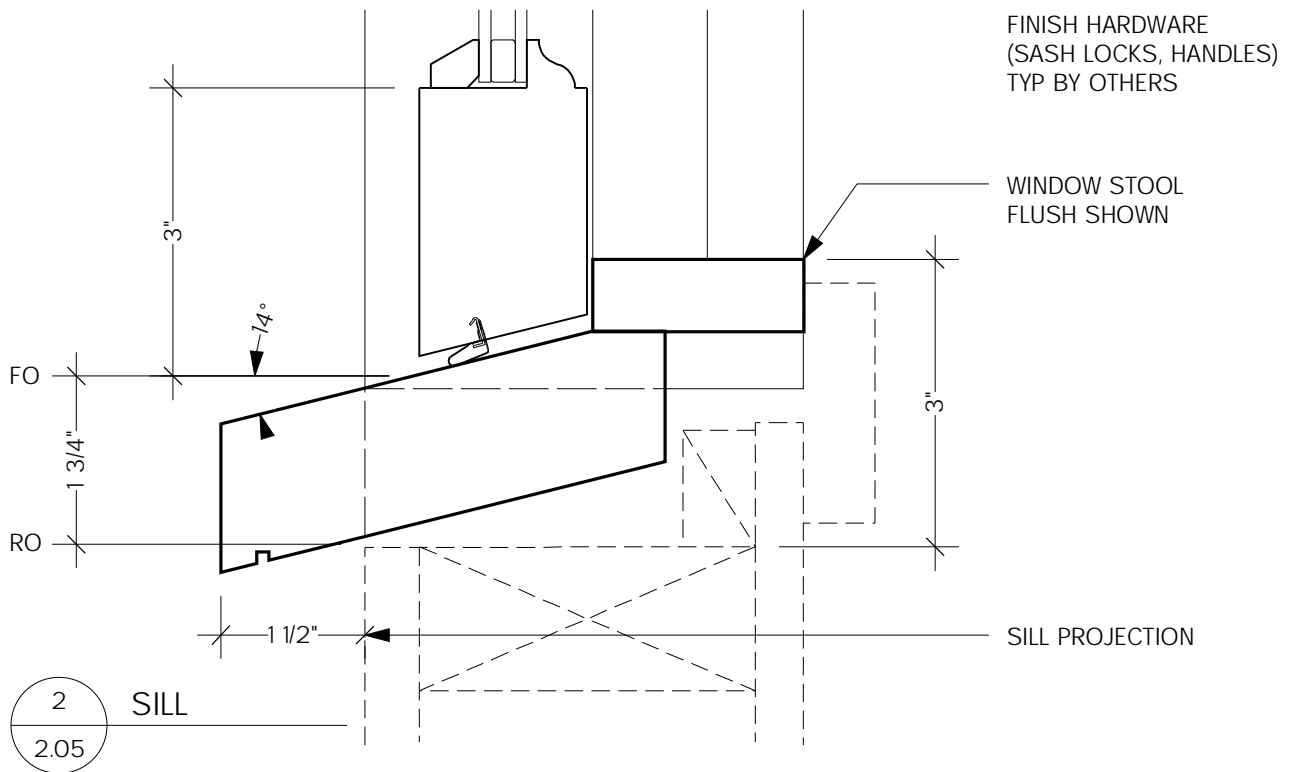
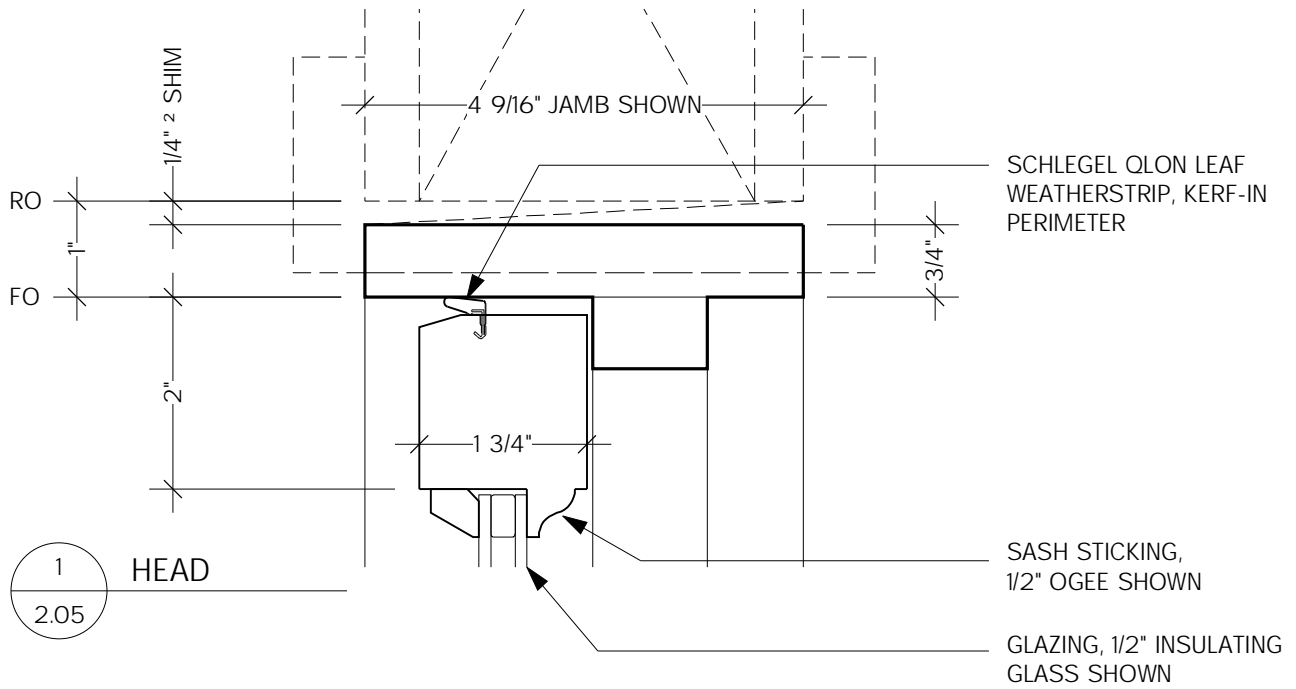
----- SHORT DASHED LINE INDICATES BY OTHERS

HINGED, CASEMENT (CS)	1/2 FULL SIZE		7/14/04
STANDARD DETAILS		APPROVED	SHEET 2.04

DATE

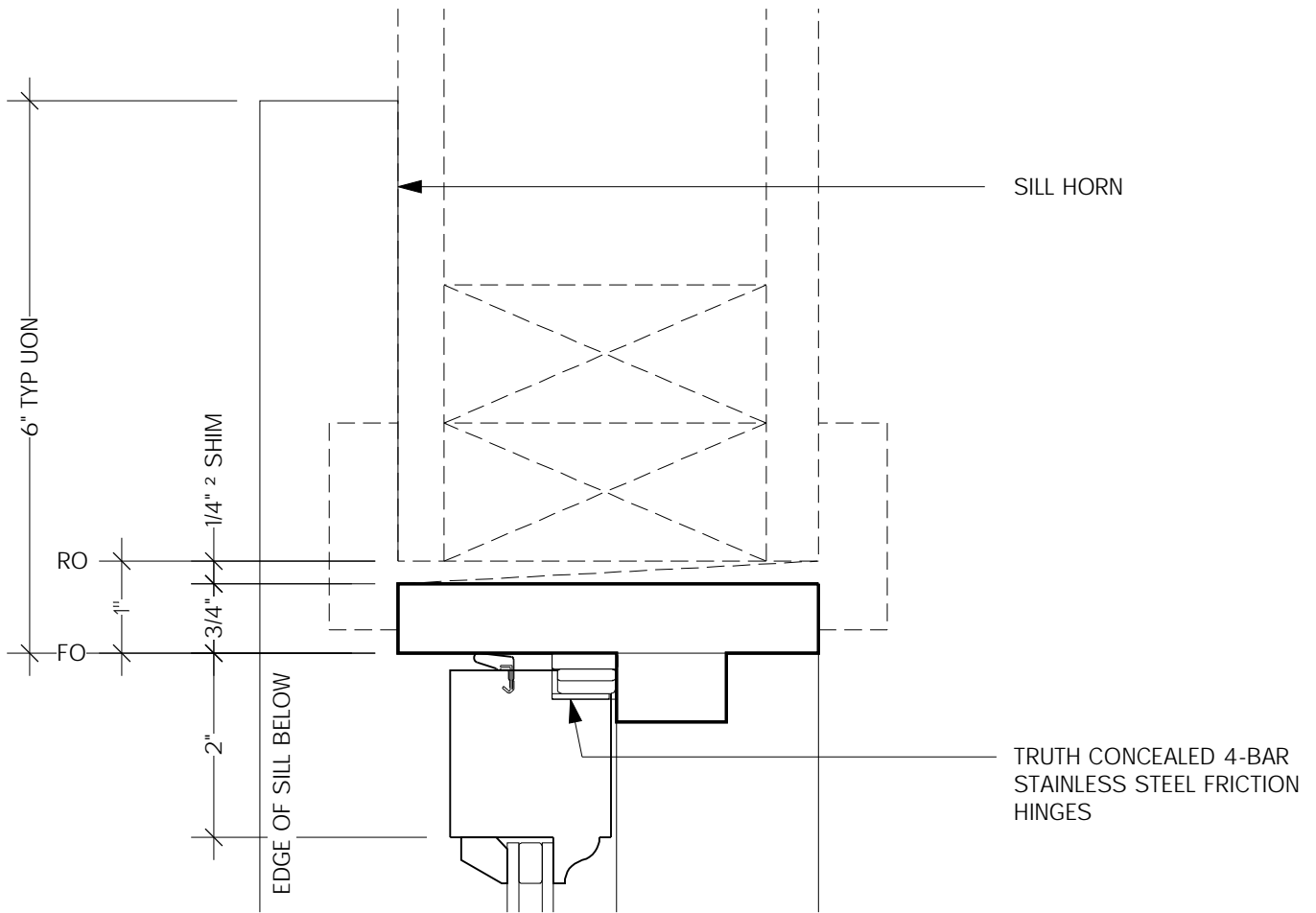
SHEET

2.04



----- SHORT DASHED LINE INDICATES BY OTHERS

HINGED, AWNING (AW)	1/2 FULL SIZE		7/14/04
STANDARD DETAILS	SEBASTOPOL WINDOW COMPANY	APPROVED	SHEET 2.05



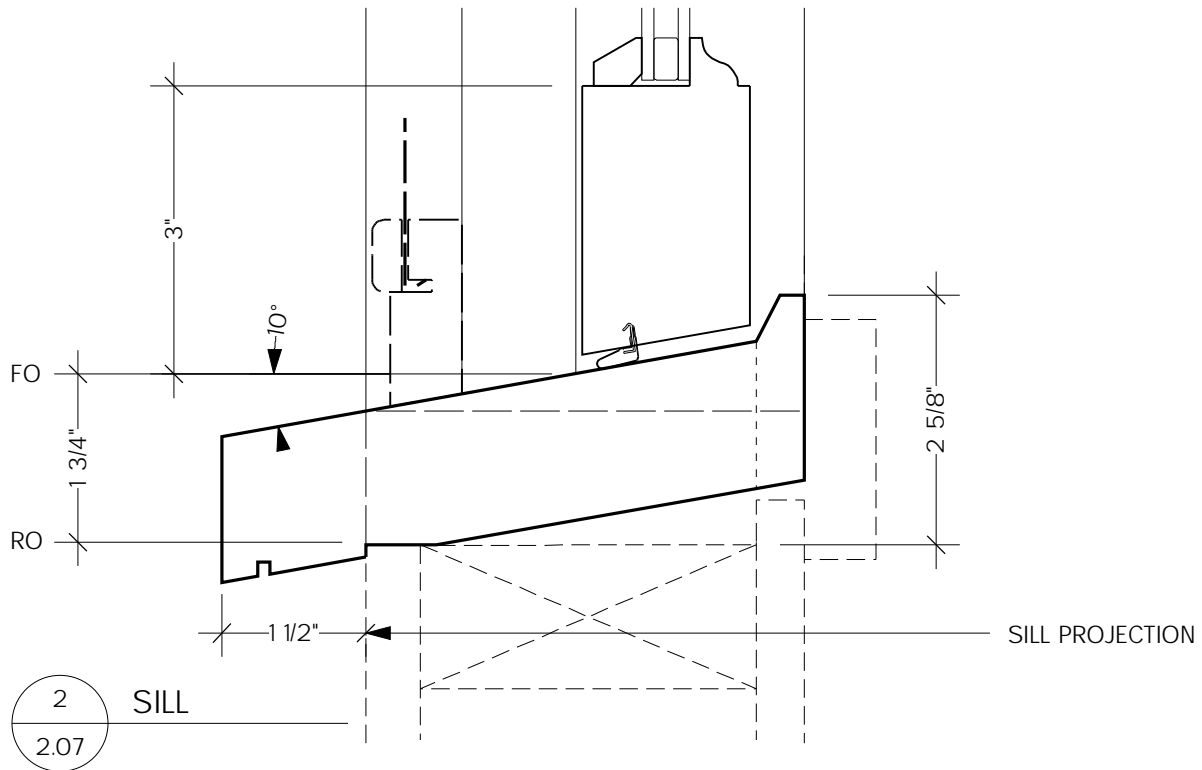
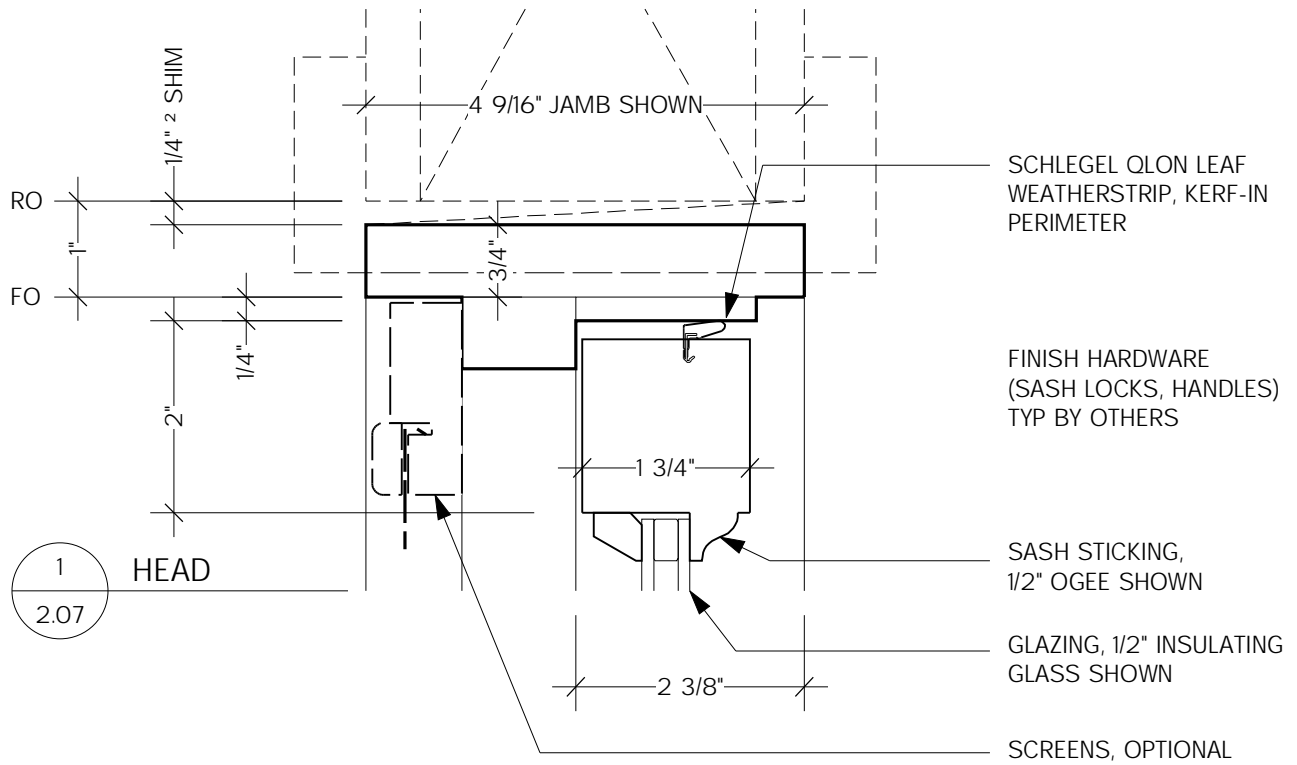
1 JAMB
2.06

----- SHORT DASHED LINE INDICATES BY OTHERS

HINGED, AWNING (AW)	1/2 FULL SIZE		7/14/04
STANDARD DETAILS	SEBASTOPOL WINDOW COMPANY	APPROVED	SHEET 2.06

DATE

StdetWEB.mcd

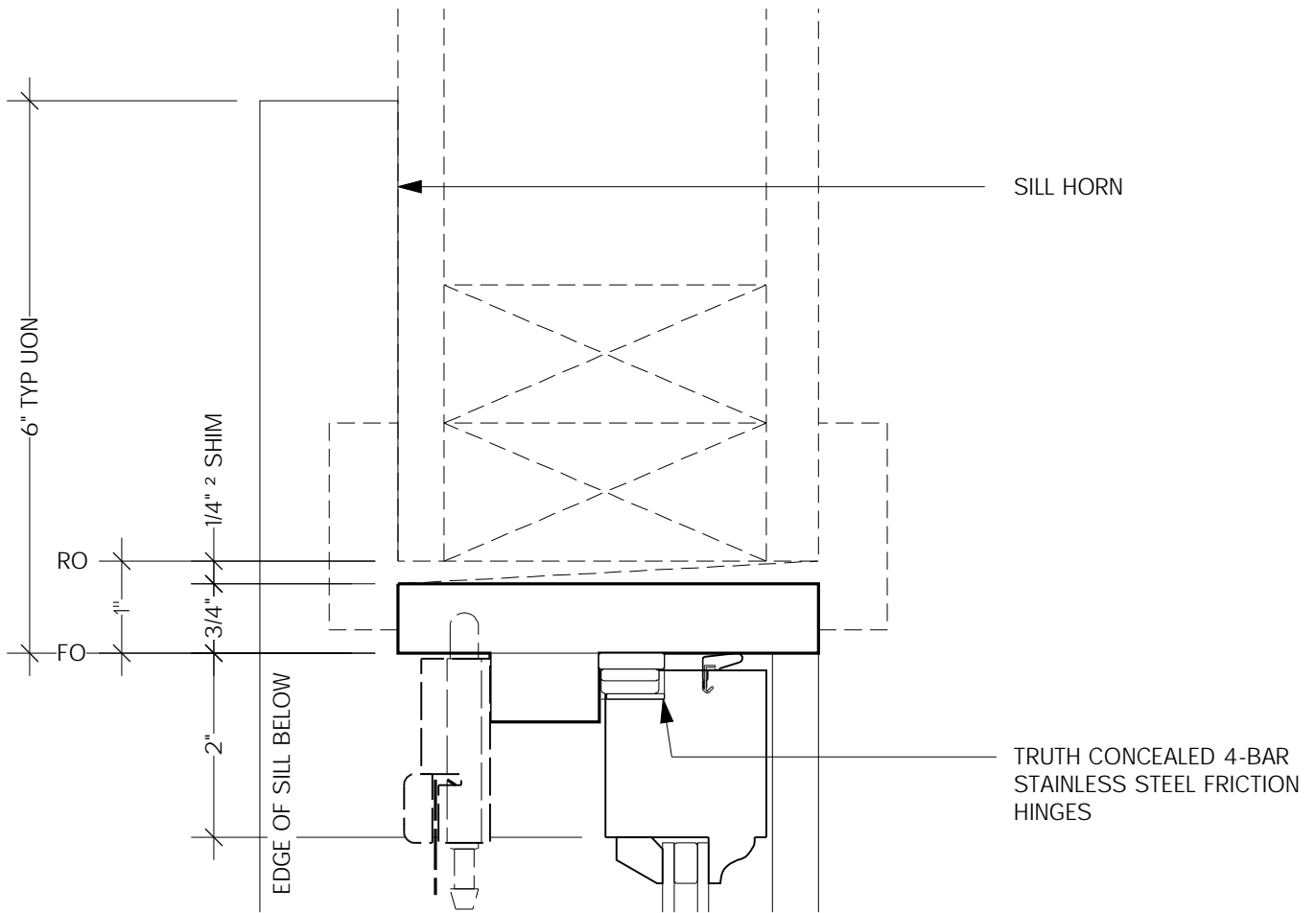


----- SHORT DASHED LINE INDICATES BY OTHERS

HINGED, HOPPER (HP)	1/2 FULL SIZE		7/14/04
STANDARD DETAILS	SEBASTOPOL WINDOW COMPANY	APPROVED	SHEET 2.07

DATE

StddetWEB.mcd



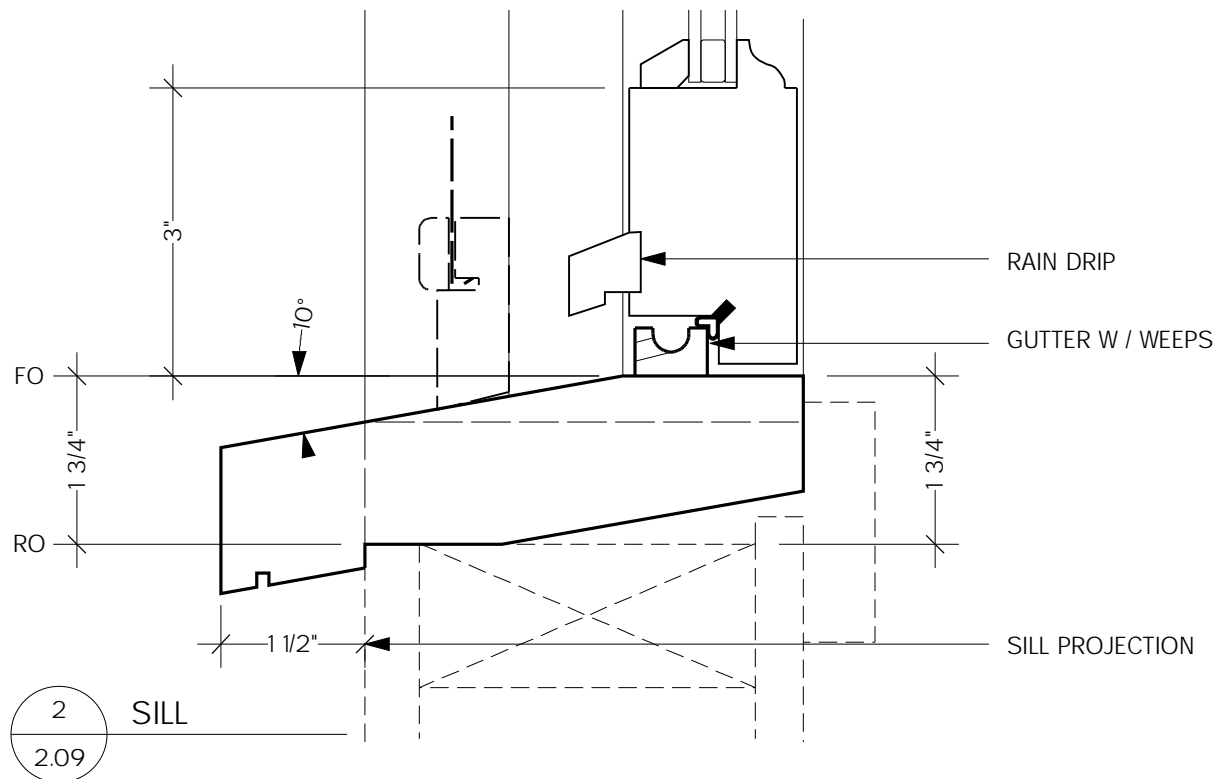
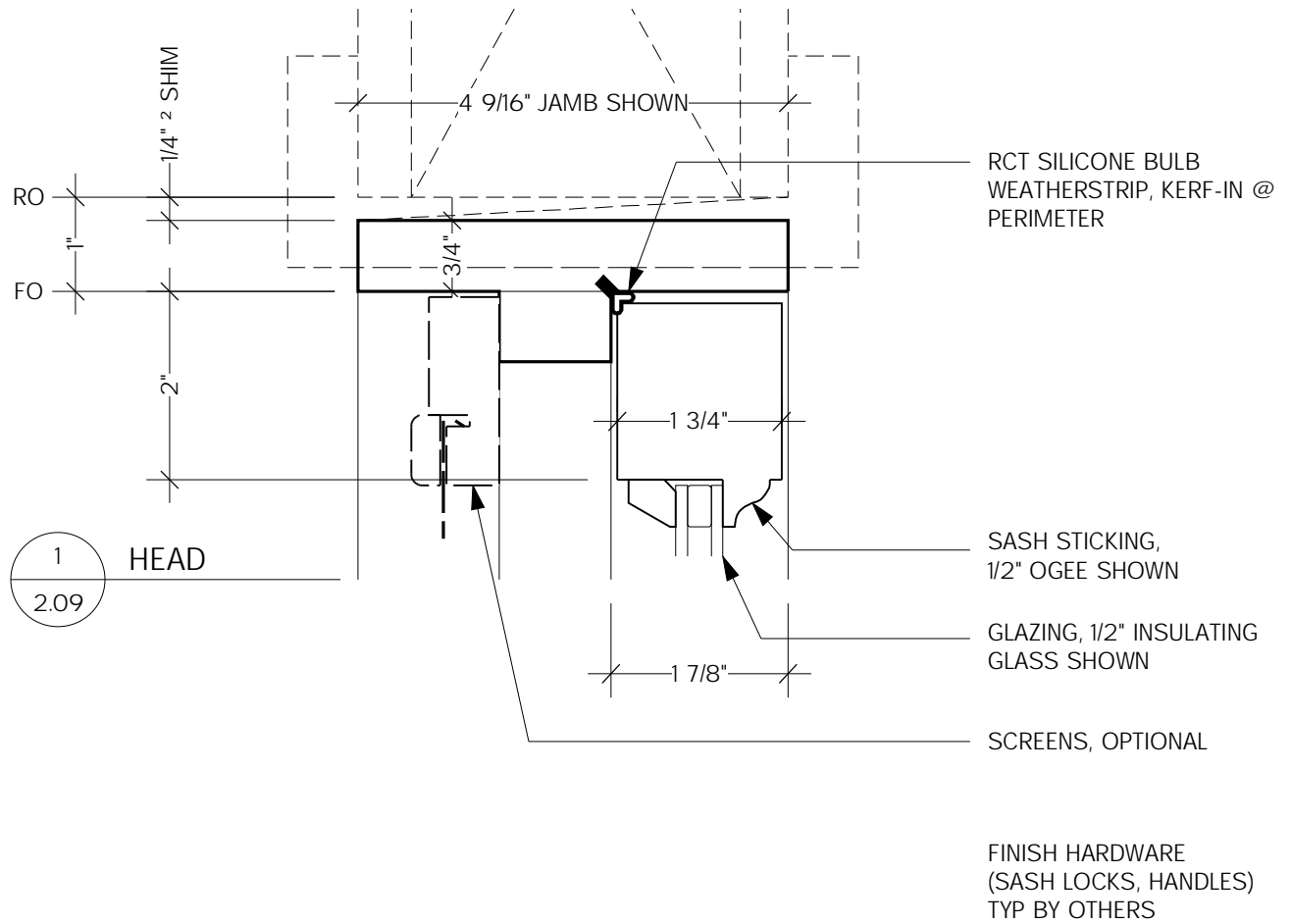
1 JAMB
2.08

----- SHORT DASHED LINE INDICATES BY OTHERS

HINGED, HOPPER (HP)	1/2 FULL SIZE		7/14/04
STANDARD DETAILS	SEBASTOPOL WINDOW COMPANY	APPROVED	SHEET 2.08

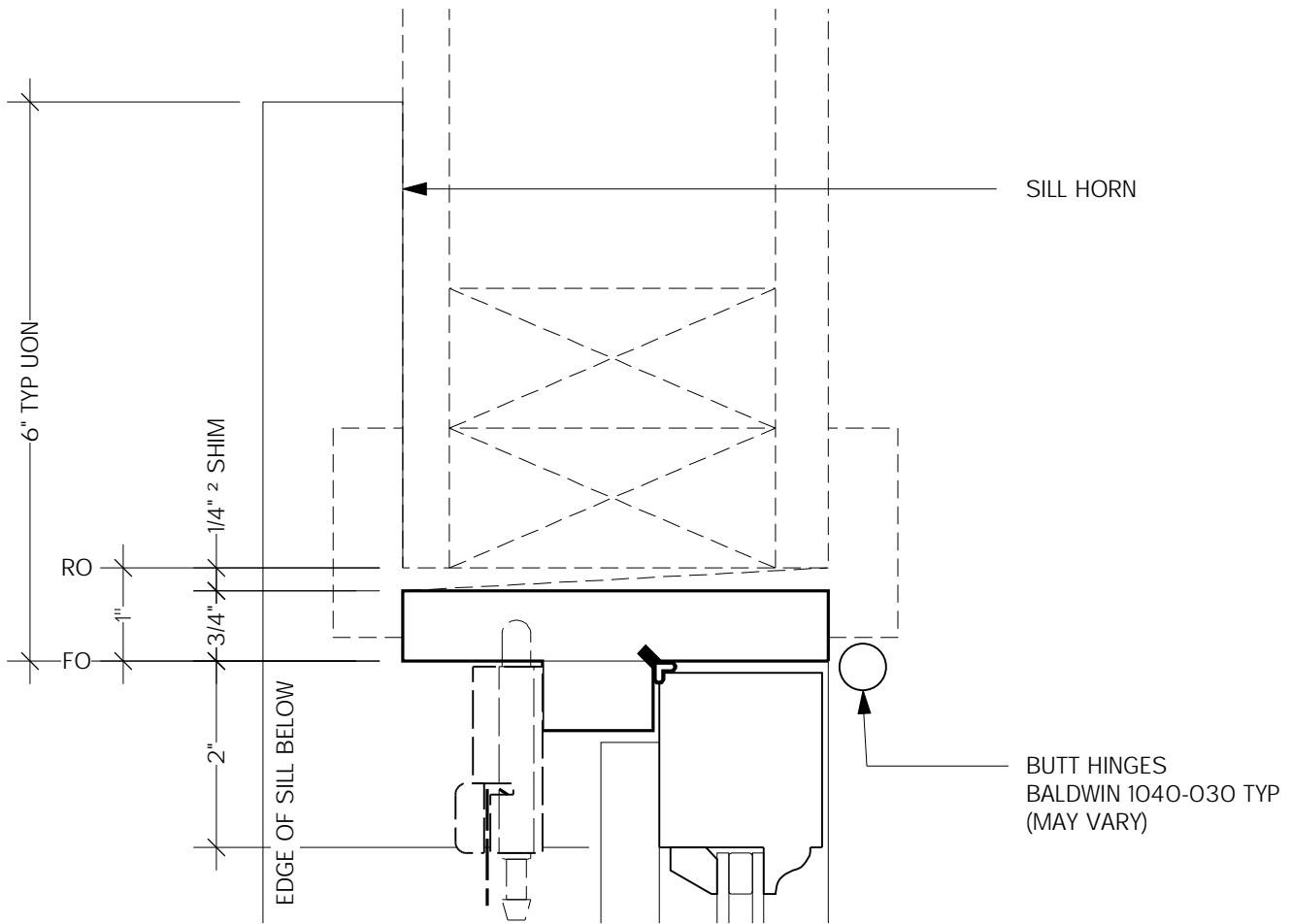
DATE

StdetWEB.mcd



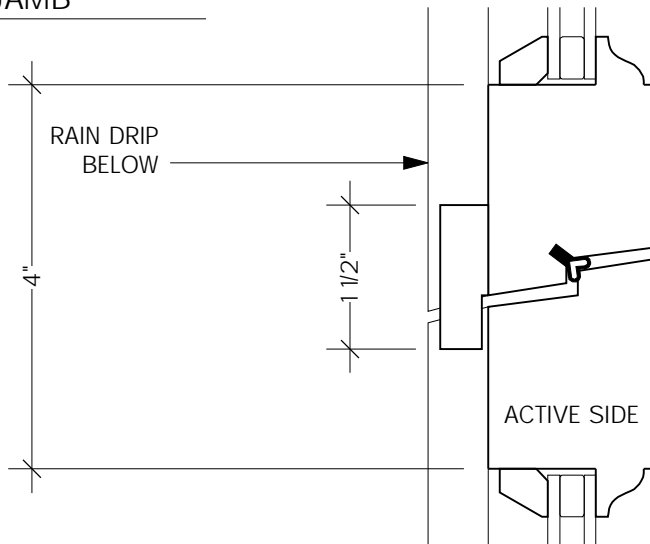
----- SHORT DASHED LINE INDICATES BY OTHERS

CASEMENT, INSWING (CI)	1/2 FULL SIZE		7/14/04
STANDARD DETAILS	SEBASTOPOL WINDOW COMPANY	APPROVED	SHEET 2.09



1
2.10

JAMB

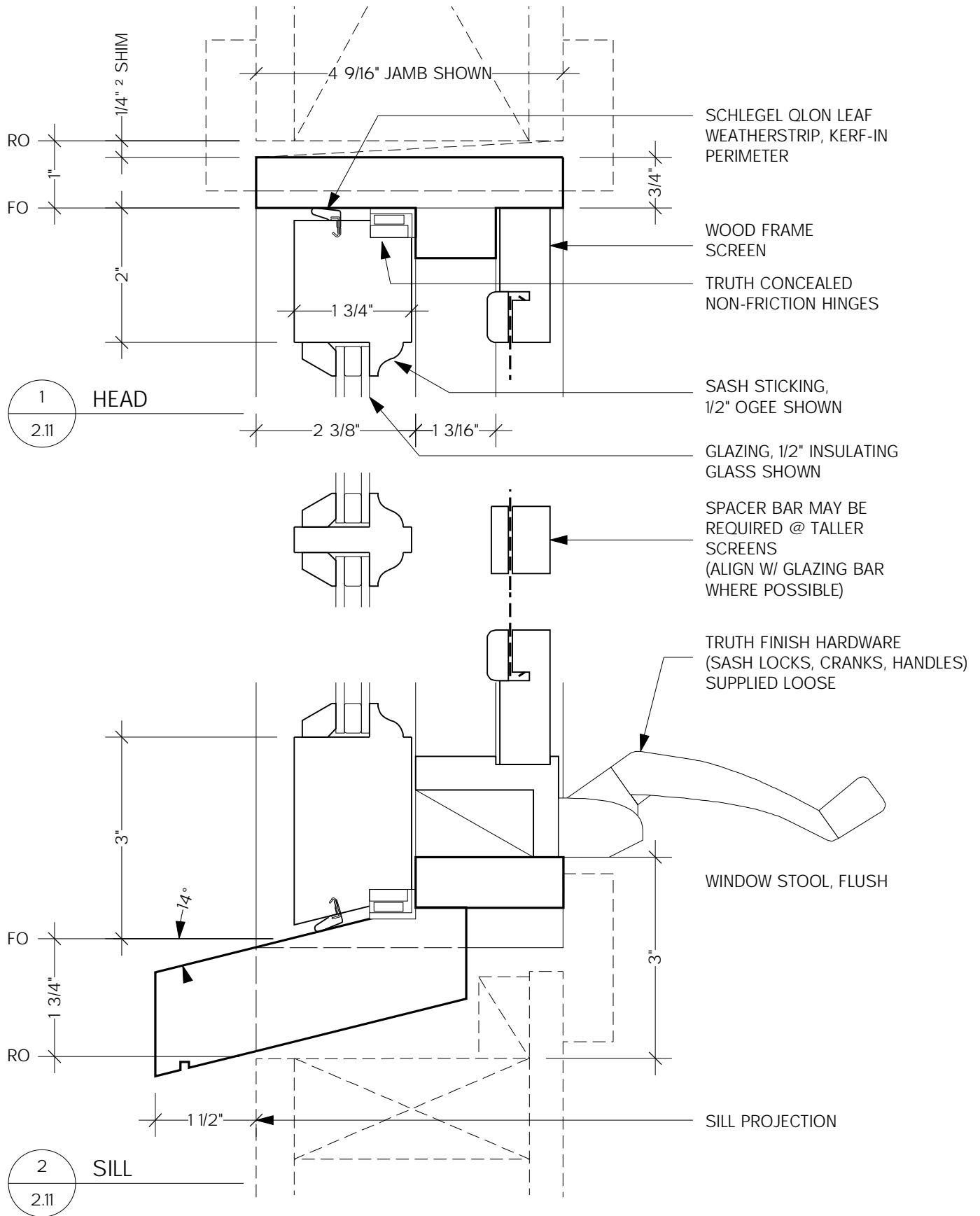


2
2.10

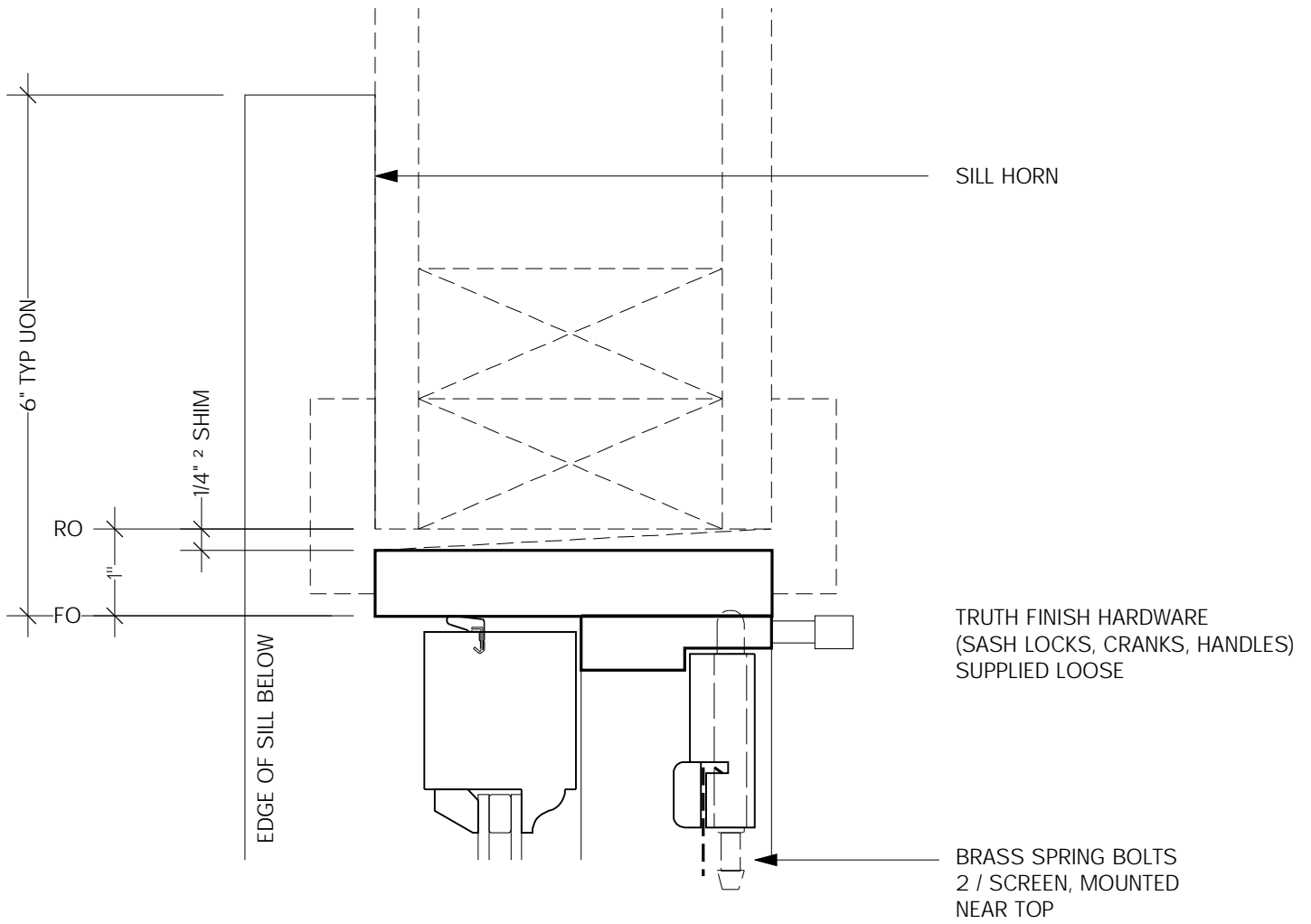
MEETING STILES
(FRENCH CASEMENT)

----- SHORT DASHED LINE INDICATES BY OTHERS

CASEMENT, INSWING (CI)	1/2 FULL SIZE		7/14/04
STANDARD DETAILS	SEBASTOPOL WINDOW COMPANY	APPROVED	SHEET 2.10



CASEMENT (CS) w/ SCREEN	1/2 FULL SIZE		7/14/04
STANDARD DETAILS	SEBASTOPOL WINDOW COMPANY	APPROVED	SHEET 2.11



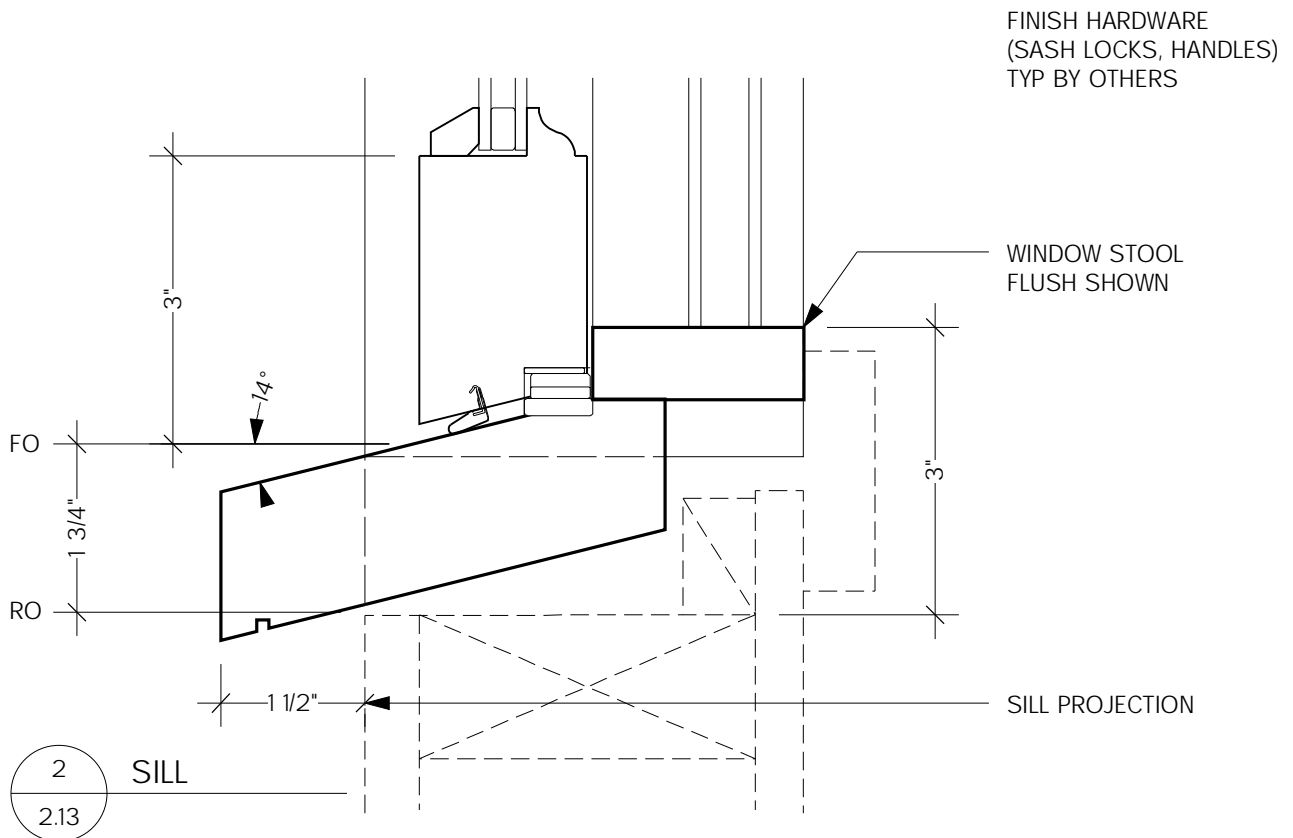
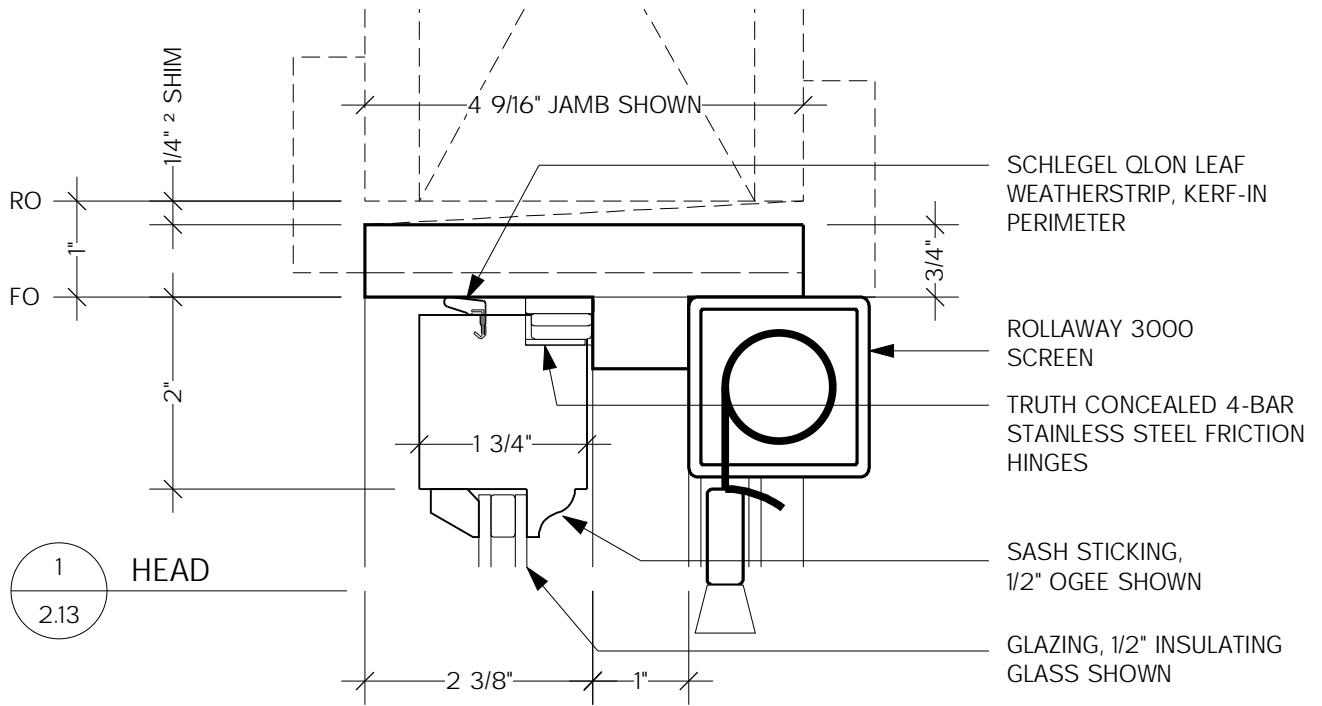
1 JAMB
2.12

----- SHORT DASHED LINE INDICATES BY OTHERS

CASEMENT (CS) w/ SCREEN	1/2 FULL SIZE		7/14/04
STANDARD DETAILS	SEBASTOPOL WINDOW COMPANY	APPROVED	SHEET 2.12

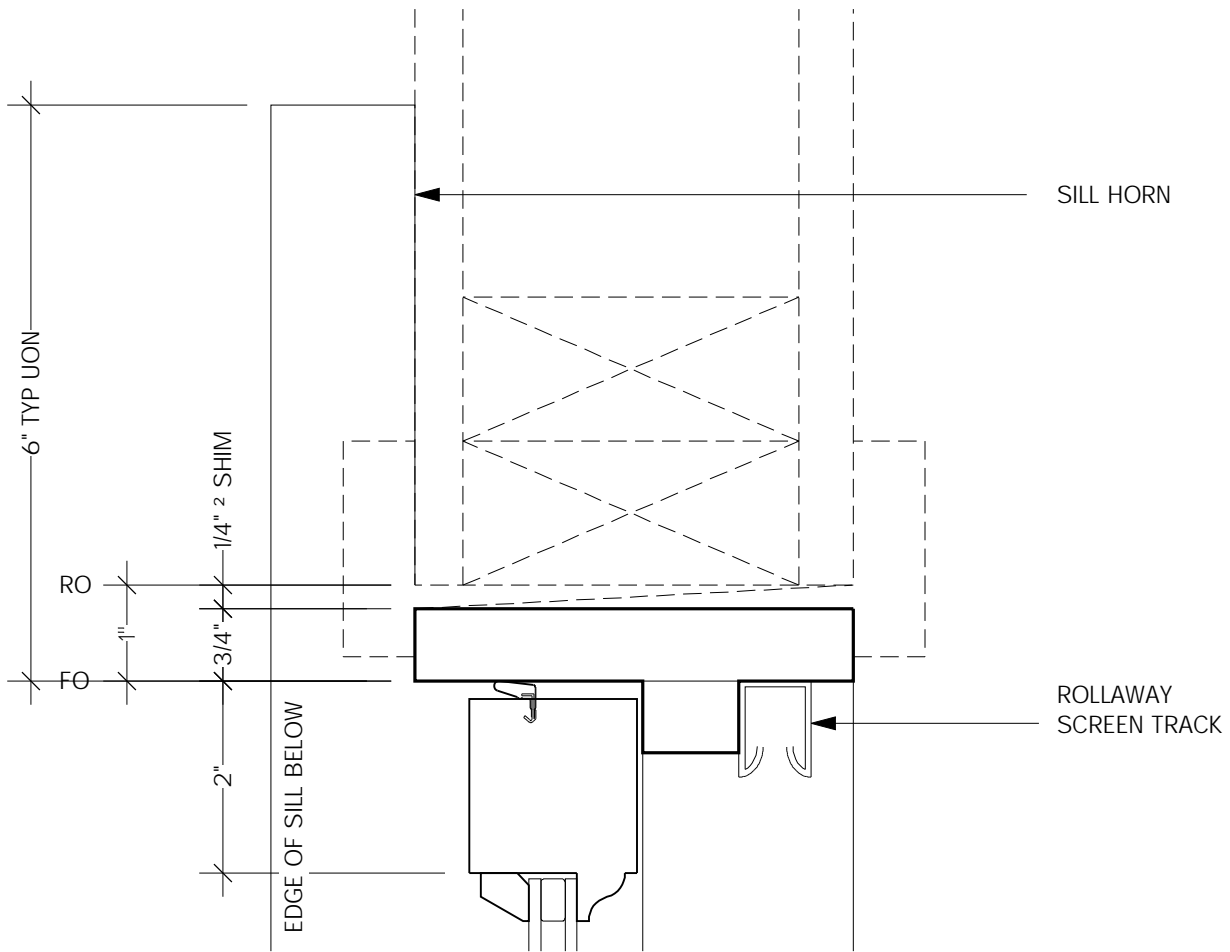
DATE

StddetWEB.mcd



----- SHORT DASHED LINE INDICATES BY OTHERS

CASEMENT (CS) w/ STD ROLLAWAY	1/2 FULL SIZE		7/14/04
STANDARD DETAILS	SEBASTOPOL WINDOW COMPANY	APPROVED	SHEET 2.13



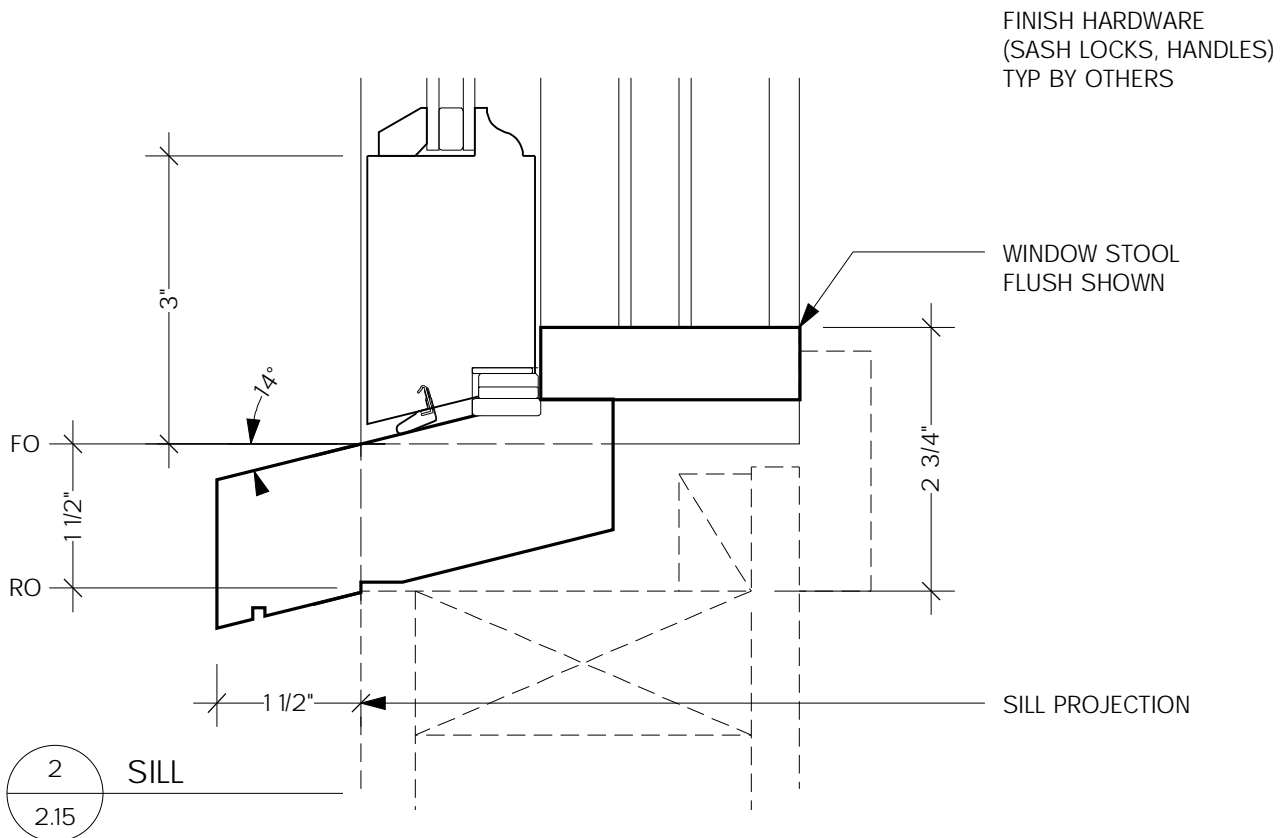
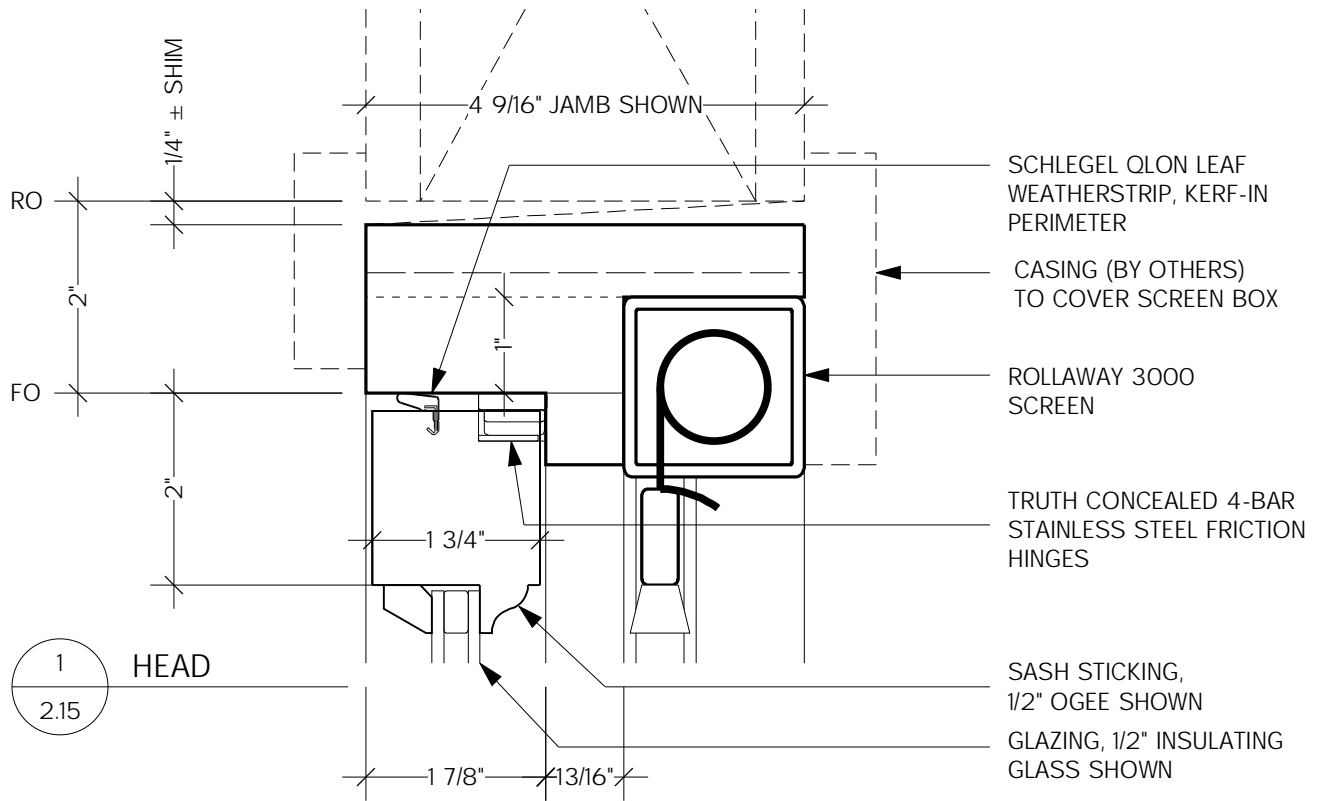
1 JAMB
2.14

----- SHORT DASHED LINE INDICATES BY OTHERS

CASEMENT (CS) w/ STD ROLLAWAY	1/2 FULL SIZE		7/14/04
STANDARD DETAILS	SEBASTOPOL WINDOW COMPANY	APPROVED	SHEET 2.14

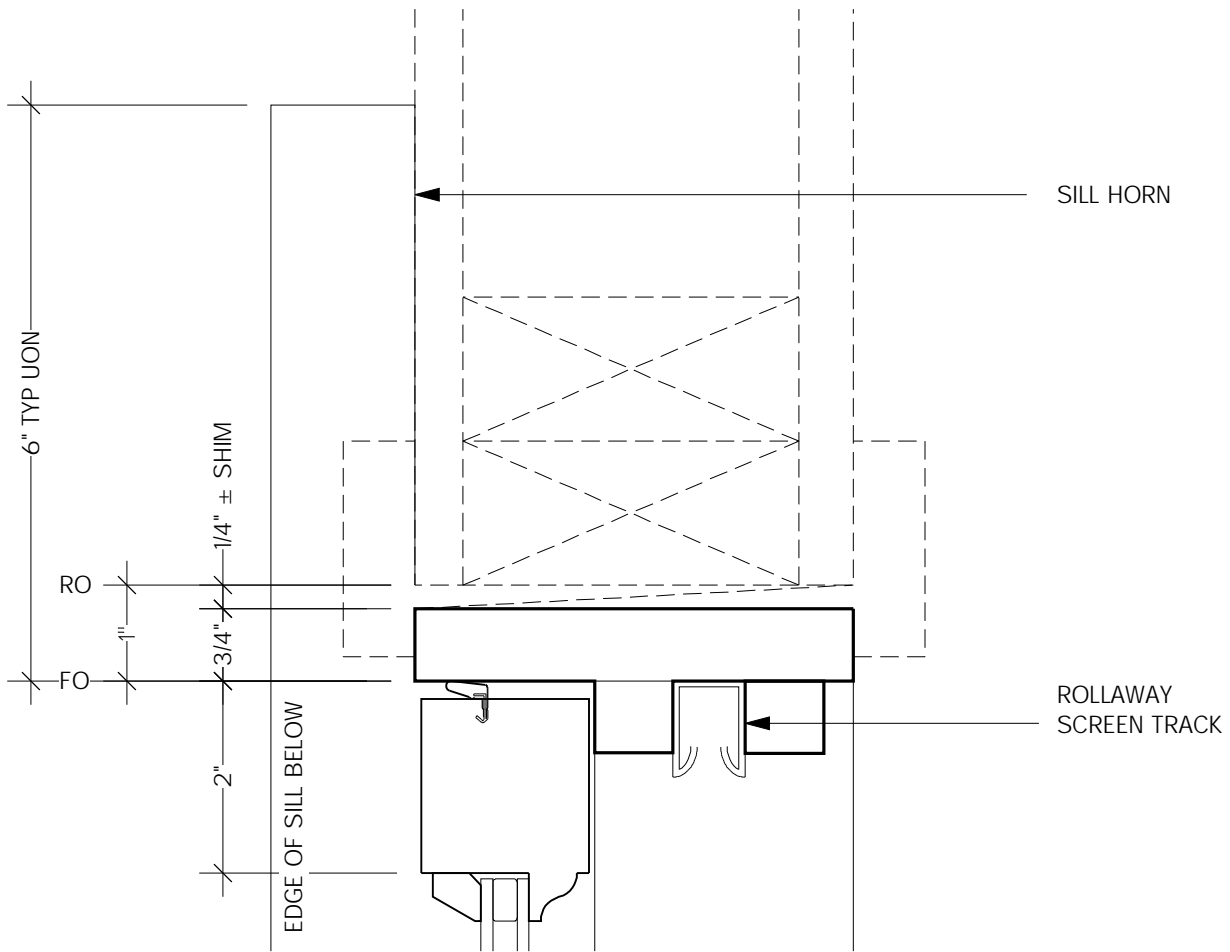
DATE

StdetWEB.mcd



----- SHORT DASHED LINE INDICATES BY OTHERS

CSMT (CS) w/ CONCEAL ROLLAWAY	1/2 FULL SIZE		7/14/04
STANDARD DETAILS	SEBASTOPOL WINDOW COMPANY	APPROVED	SHEET 2.15



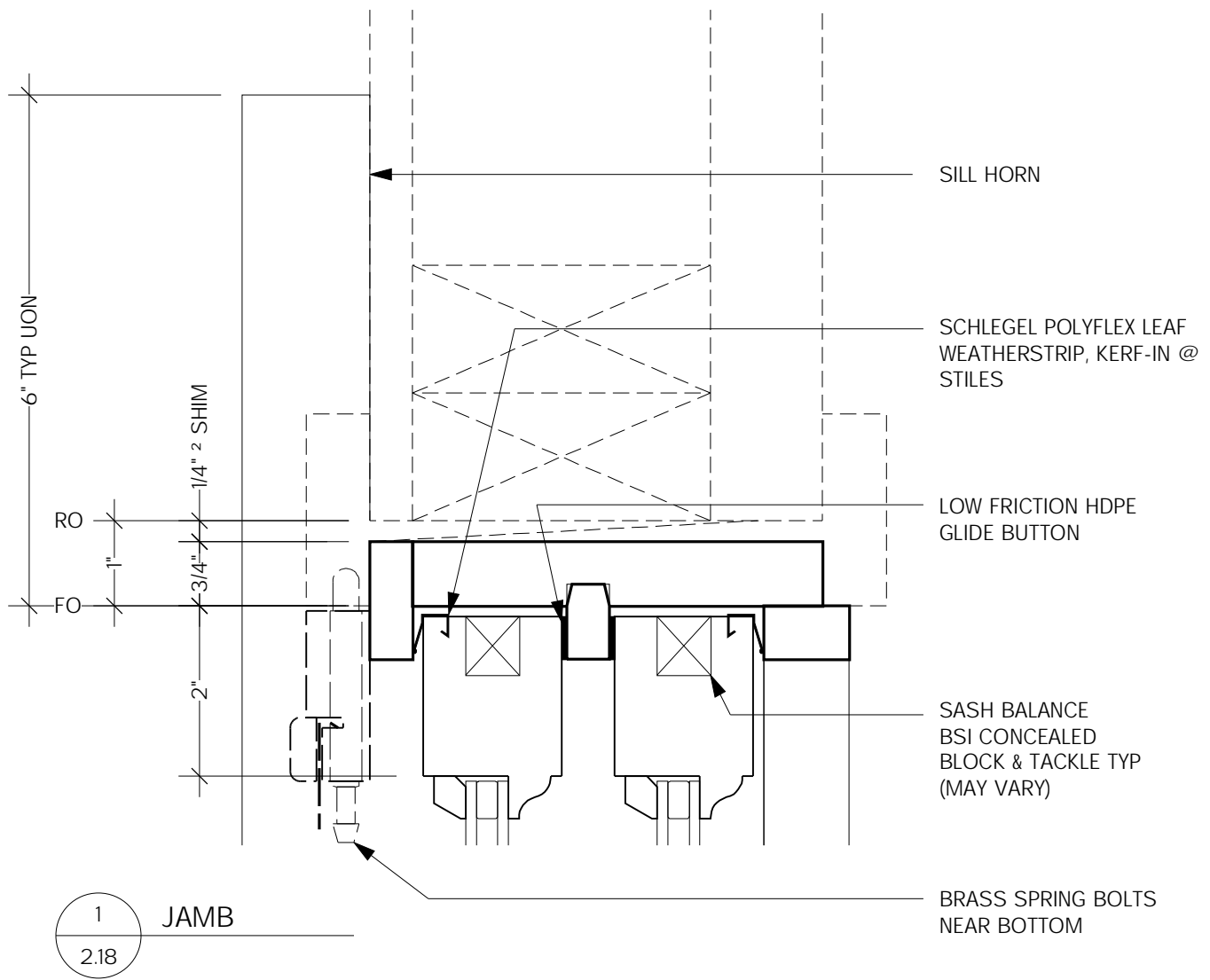
1 JAMB
2.16

----- SHORT DASHED LINE INDICATES BY OTHERS

CSMT (CS) w/ CONCEALED ROLLAWAY	1/2 FULL SIZE		7/14/04
STANDARD DETAILS	SEBASTOPOL WINDOW COMPANY	APPROVED	SHEET 2.16

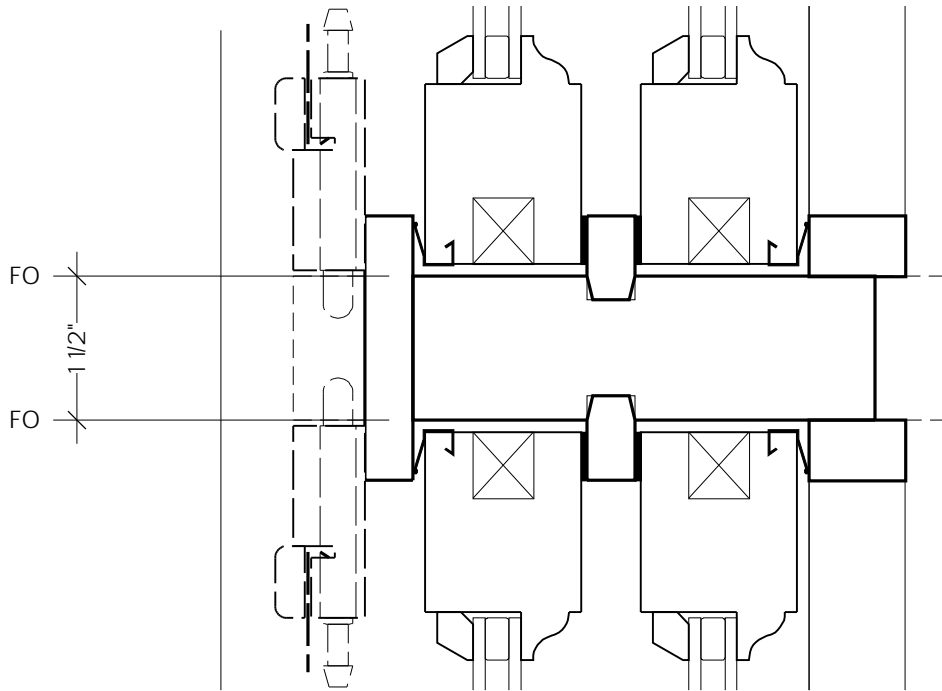
DATE

StdetWEB.mcd



----- SHORT DASHED LINE INDICATES BY OTHERS

DOUBLE HUNG (DH)	1/2 FULL SIZE		7/14/04
STANDARD DETAILS	SEBASTOPOL WINDOW COMPANY	APPROVED	SHEET 2.18



1 MULLION
2.19

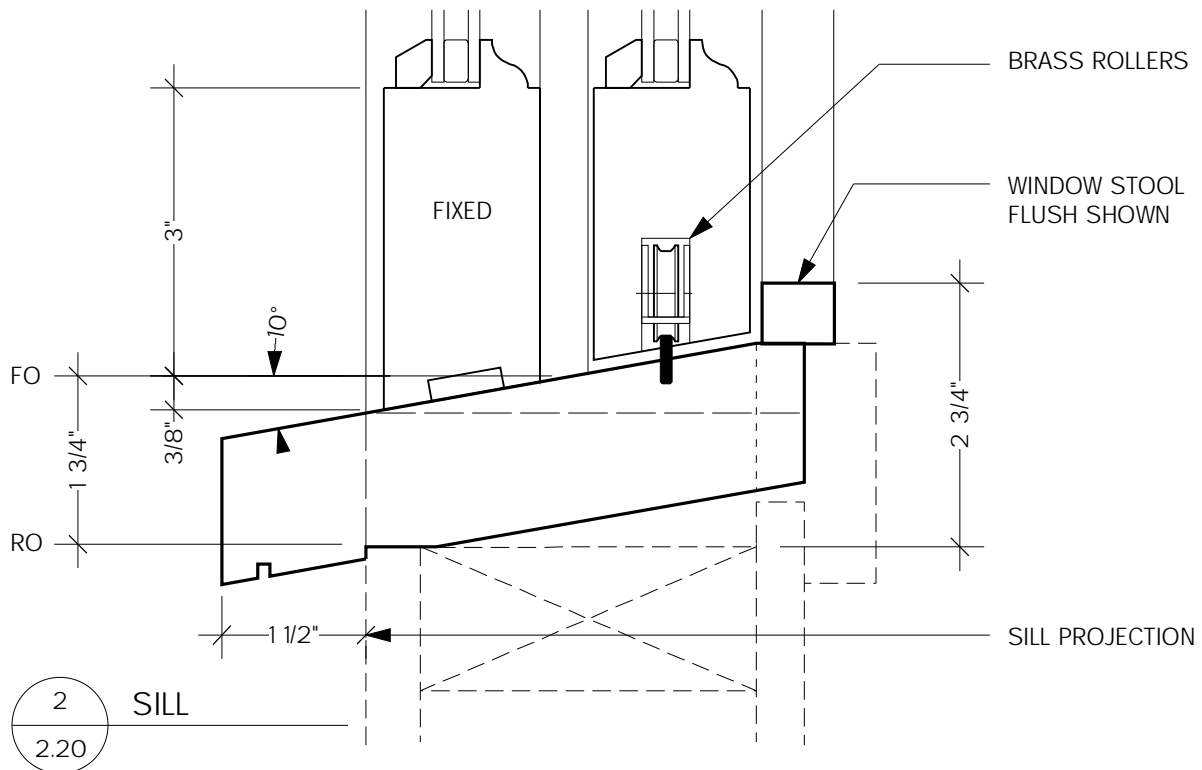
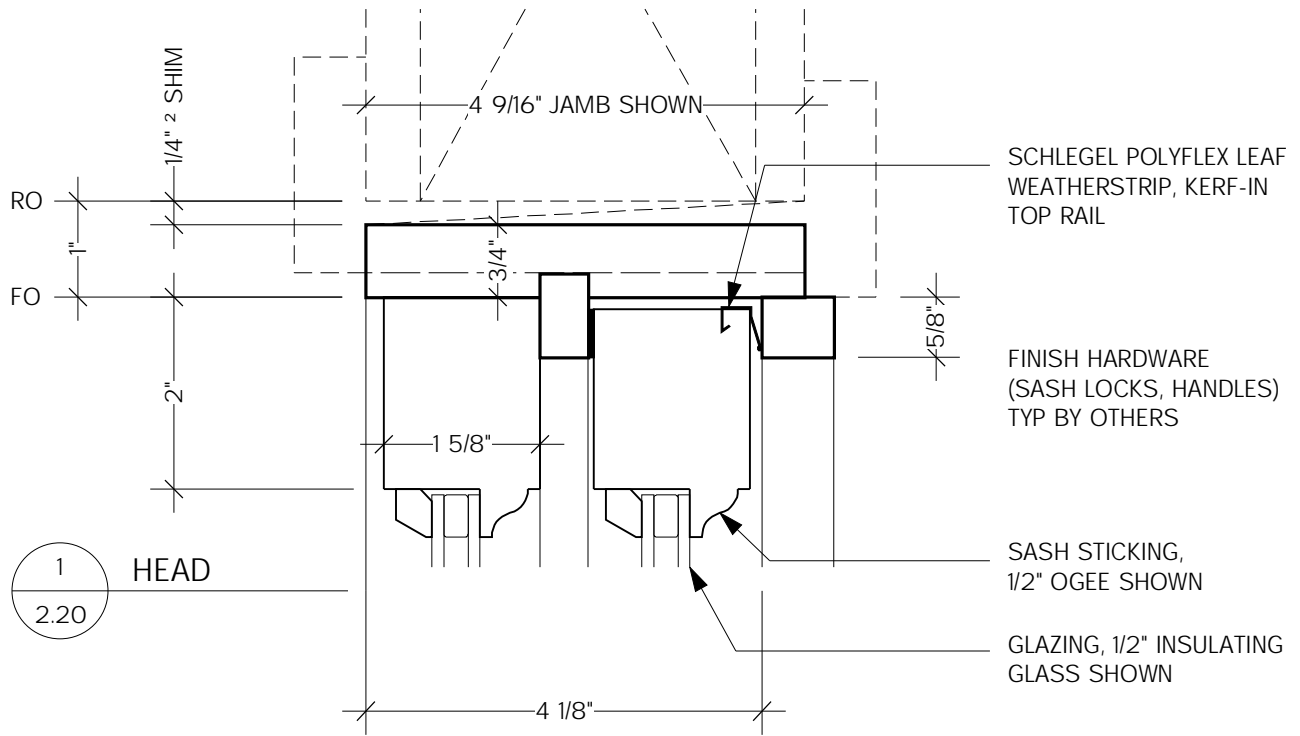
----- SHORT DASHED LINE INDICATES BY OTHERS

DOUBLE HUNG (DH)	1/2 FULL SIZE		7/14/04
STANDARD DETAILS		APPROVED	SHEET 2.19

DATE

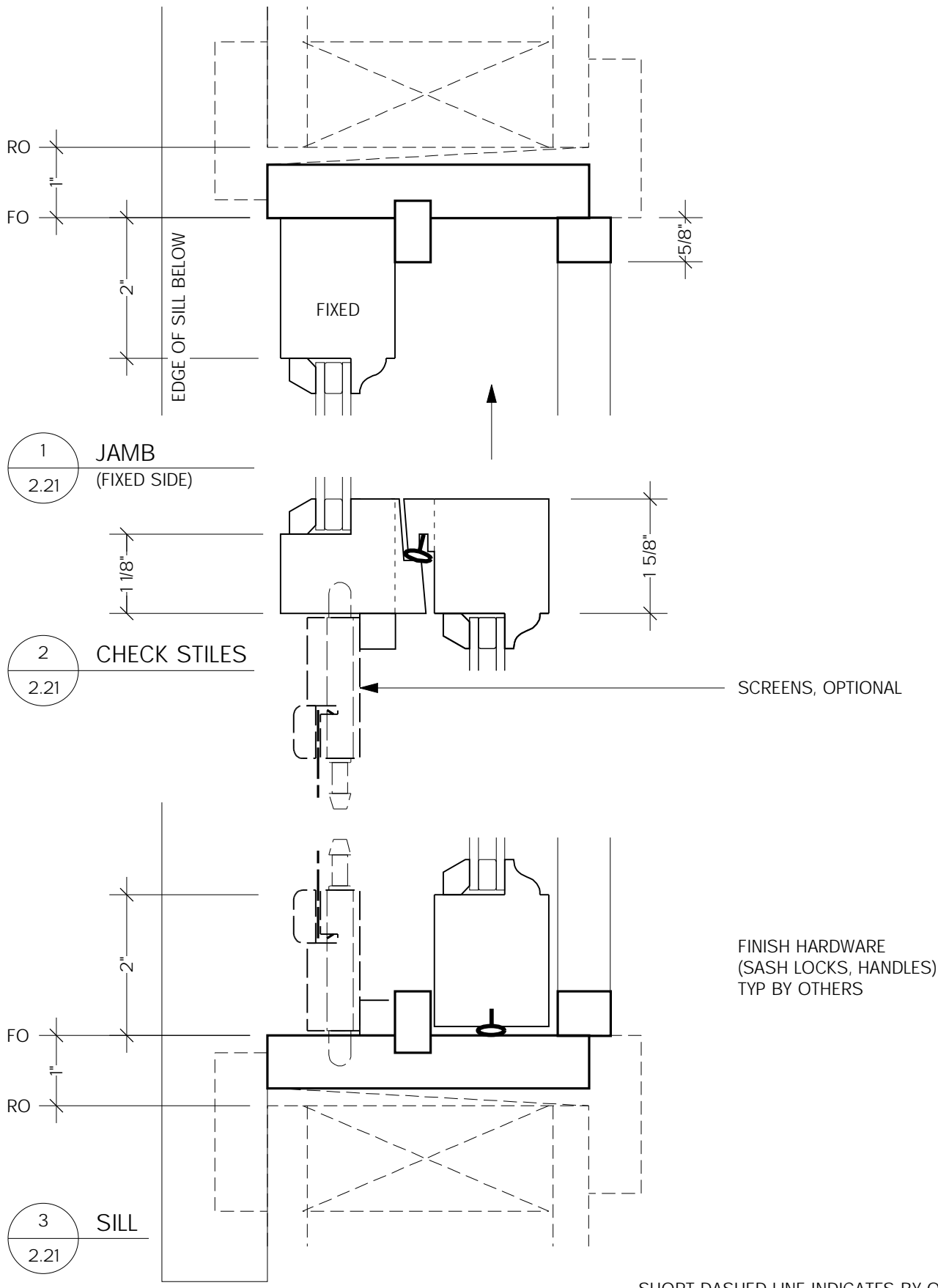
SHEET

StdetWEB.mcd

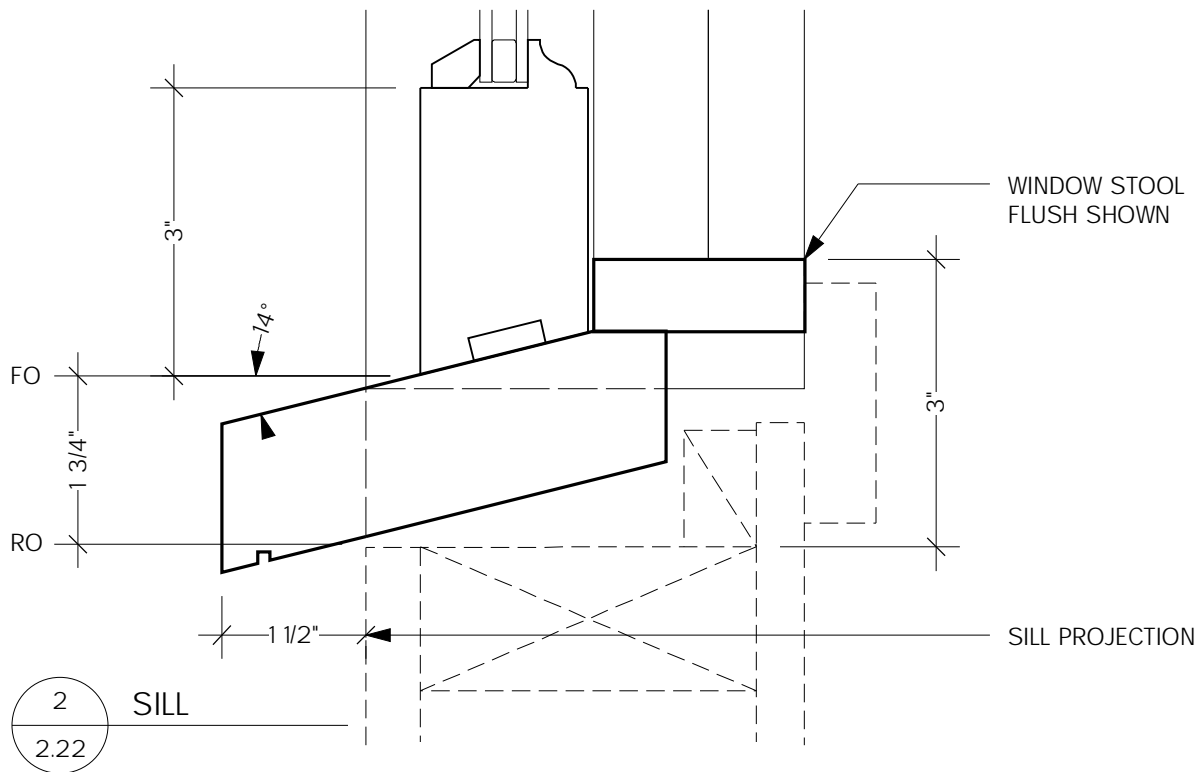
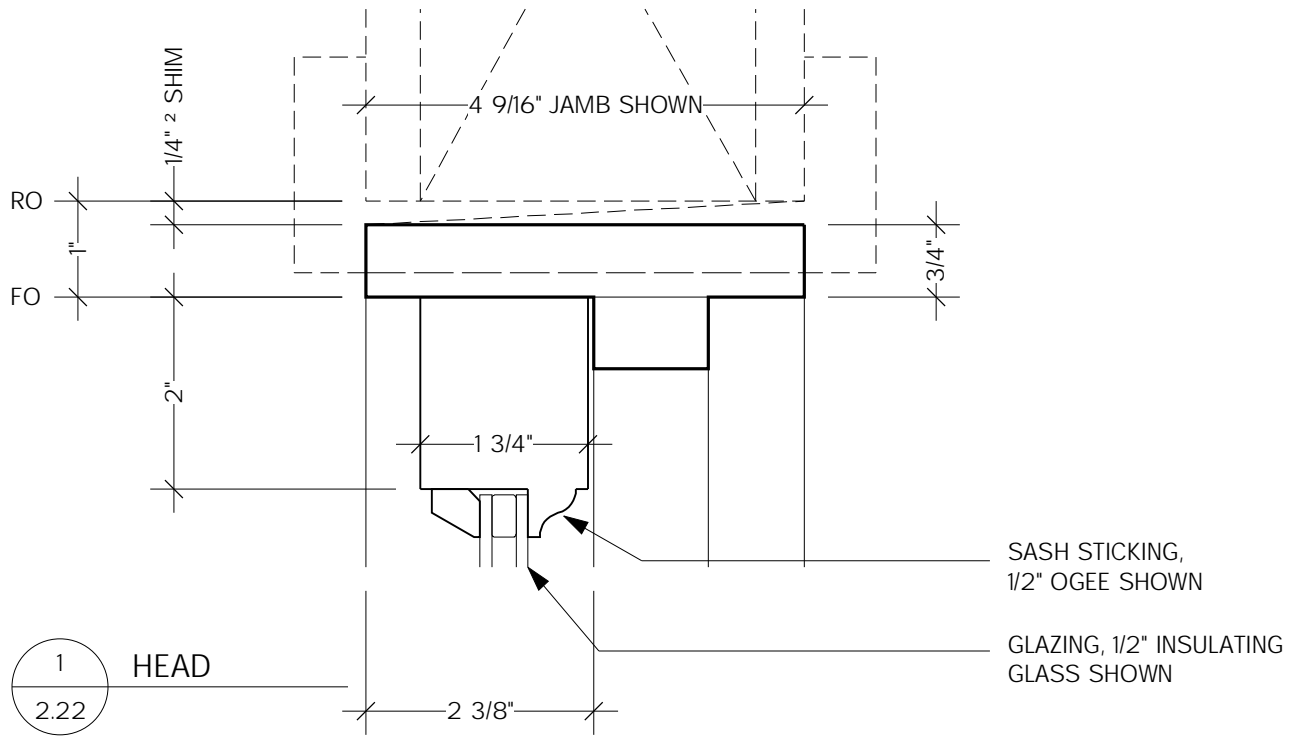


----- SHORT DASHED LINE INDICATES BY OTHERS

SLIDER (SL)	1/2 FULL SIZE		7/14/04
STANDARD DETAILS	SEBASTOPOL WINDOW COMPANY	APPROVED	SHEET 2.20

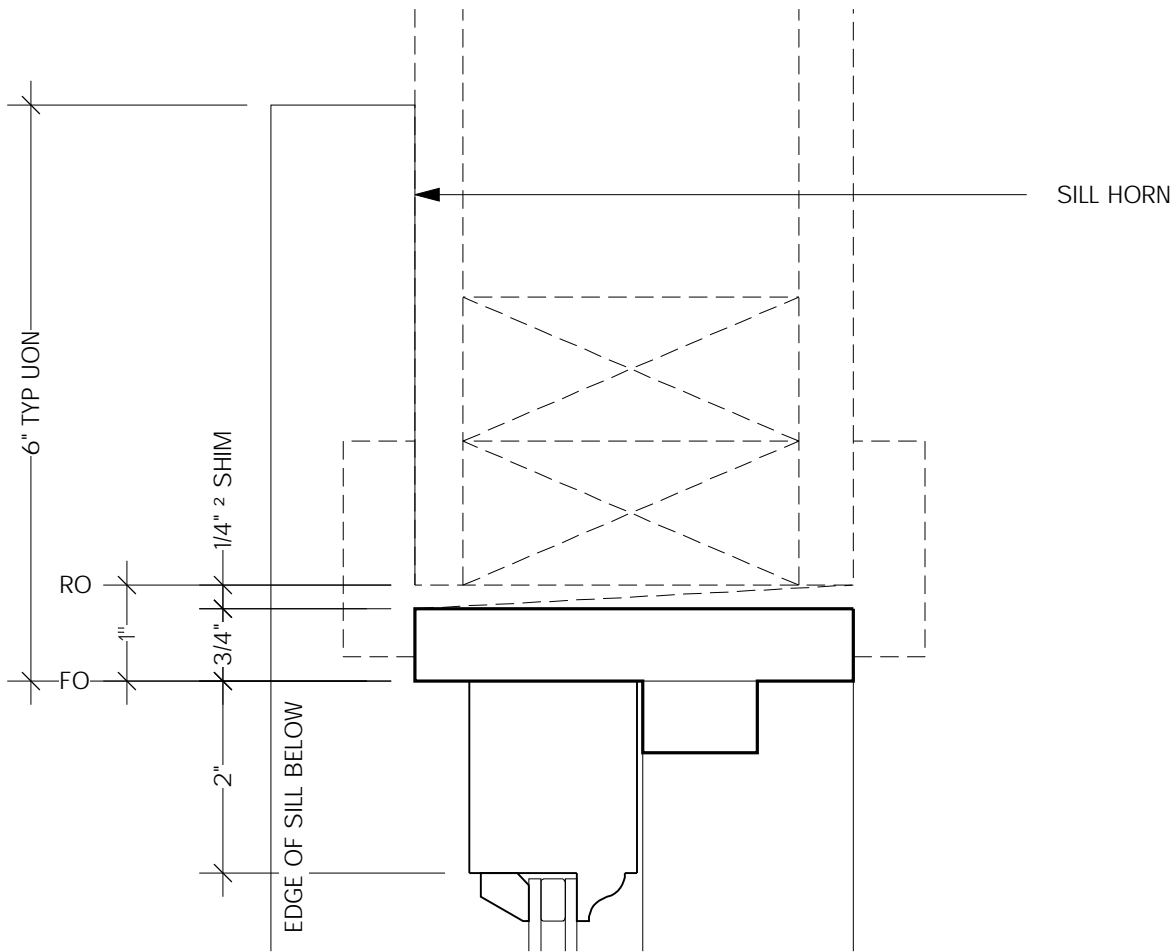


SLIDER (SL)	1/2 FULL SIZE		7/14/04
STANDARD DETAILS	SEBASTOPOL WINDOW COMPANY	APPROVED	SHEET 2.21



----- SHORT DASHED LINE INDICATES BY OTHERS

FIXED (FX)	1/2 FULL SIZE		7/14/04
STANDARD DETAILS	SEBASTOPOL WINDOW COMPANY	APPROVED	SHEET 2.22



1 JAMB
2.23

----- SHORT DASHED LINE INDICATES BY OTHERS

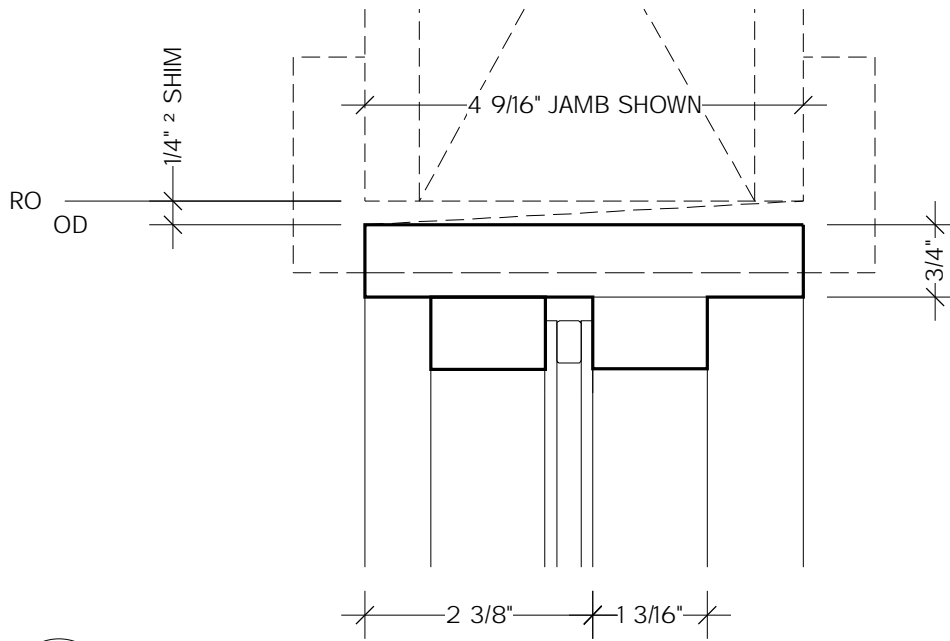
FIXED (FX)	1/2 FULL SIZE		7/14/04
STANDARD DETAILS	SEBASTOPOL WINDOW COMPANY	APPROVED	SHEET 2.23

DATE

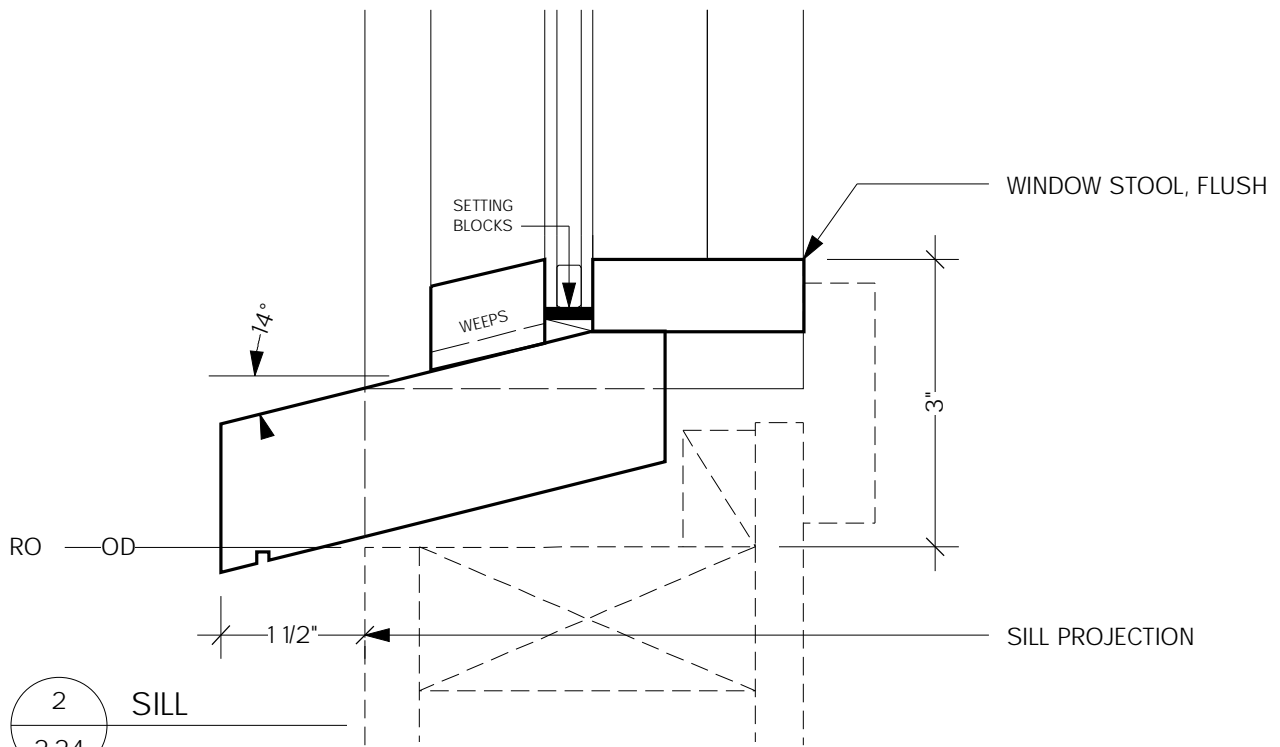
SHEET

2.23

StdetWEB.mcd



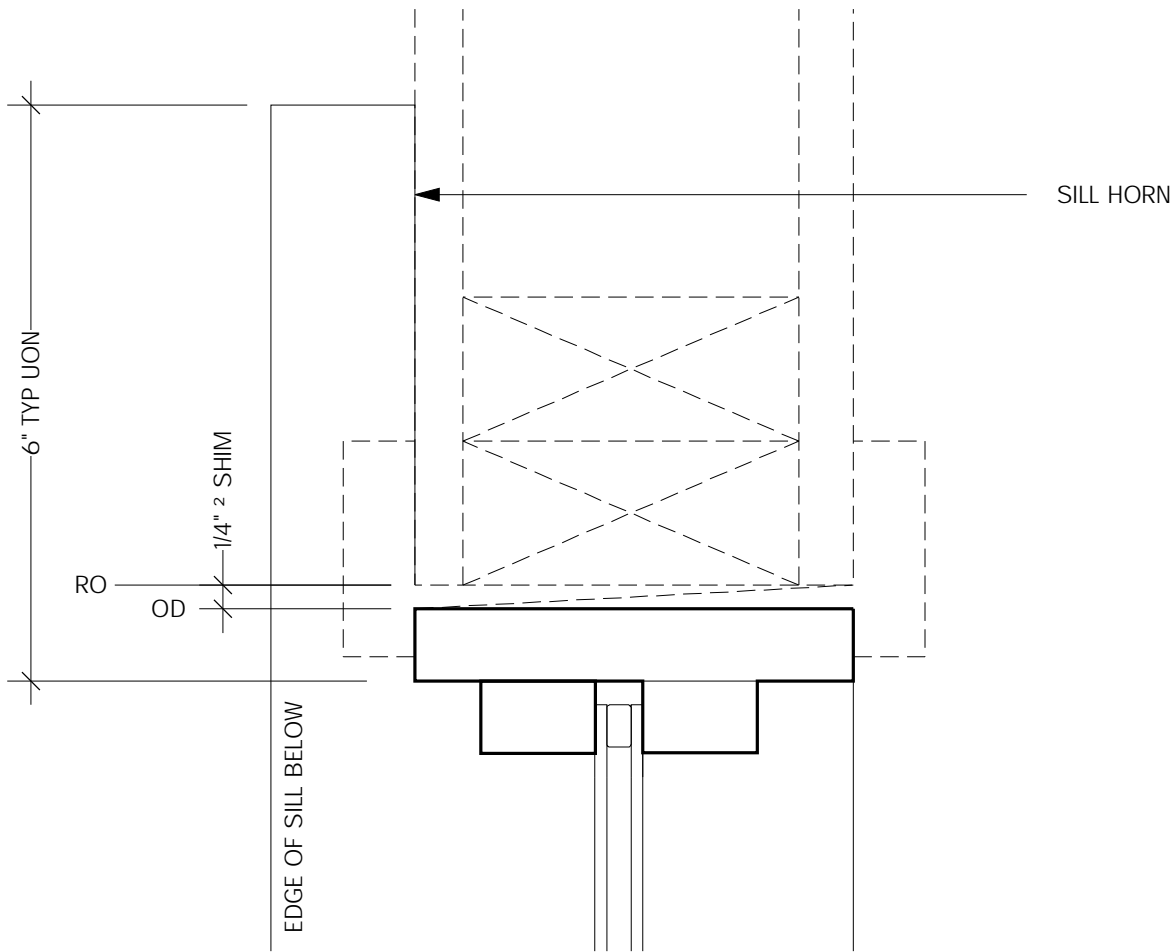
1 HEAD
2.24



2 SILL
2.24

----- SHORT DASHED LINE INDICATES BY OTHERS

DIRECT GLAZED (DG)	1/2 FULL SIZE		7/14/04
STANDARD DETAILS	SEBASTOPOL WINDOW COMPANY	APPROVED	SHEET 2.24



1
2.25

JAMB

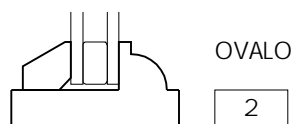
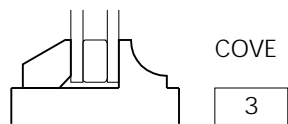
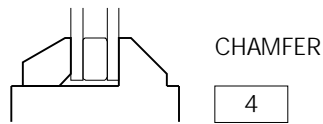
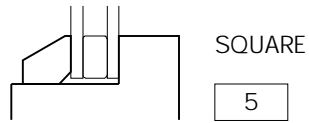
----- SHORT DASHED LINE INDICATES BY OTHERS

DIRECT GLAZED (DG)	1/2 FULL SIZE		7/14/04
STANDARD DETAILS	SEBASTOPOL WINDOW COMPANY	APPROVED	SHEET 2.25

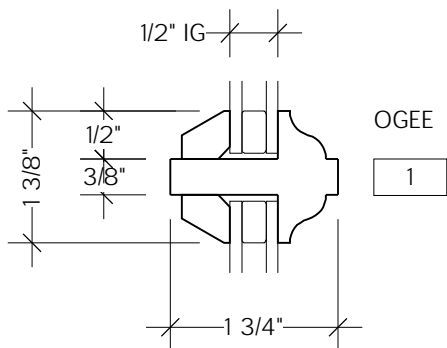
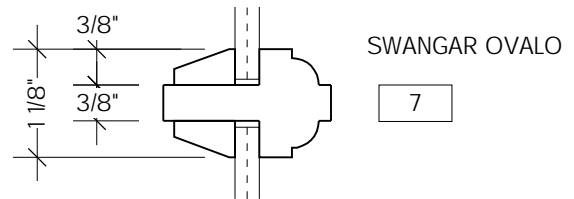
DATE

SHEET

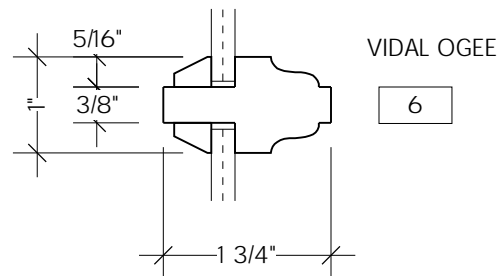
2.25



LAMINATED SAFETY GLASS



LAMINATED SAFETY GLASS



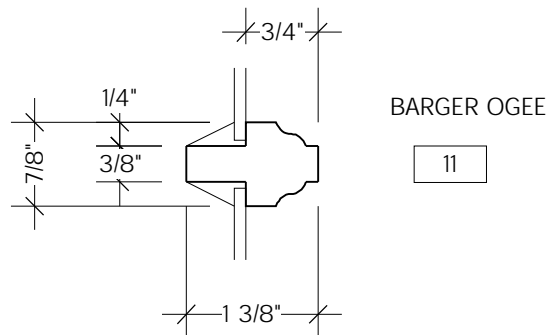
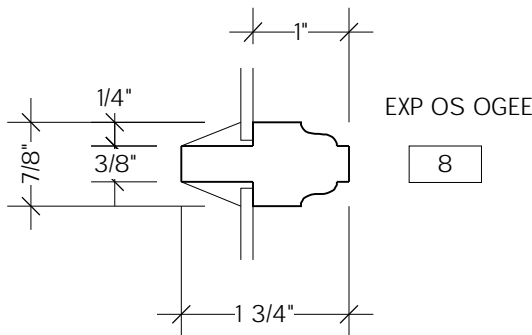
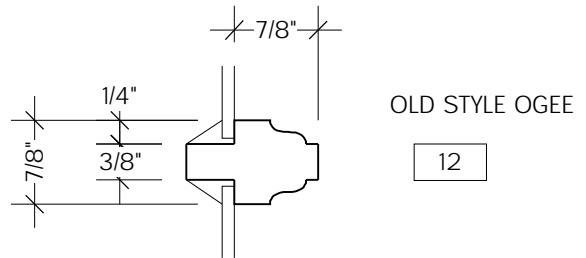
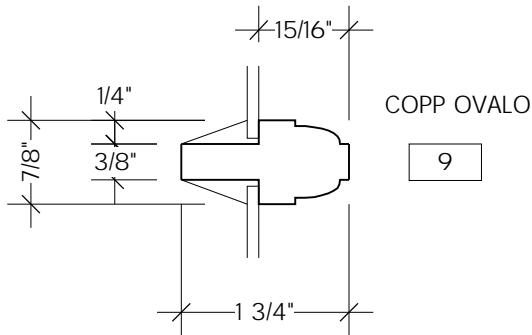
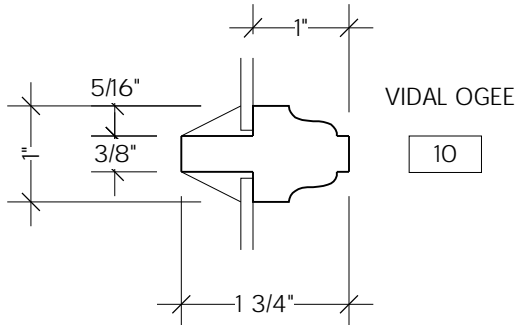
STD STOP GLAZED, 1/2 IG

----- SHORT DASHED LINE INDICATES BY OTHERS

SASH STICKING PROFILES	1/2 FULL SIZE		7/14/04
STANDARD DETAILS	SEBASTOPOL WINDOW COMPANY	APPROVED	SHEET 2.41

DATE

StdetWEB.mcd



PUTTY GLAZED, 1/8 GL

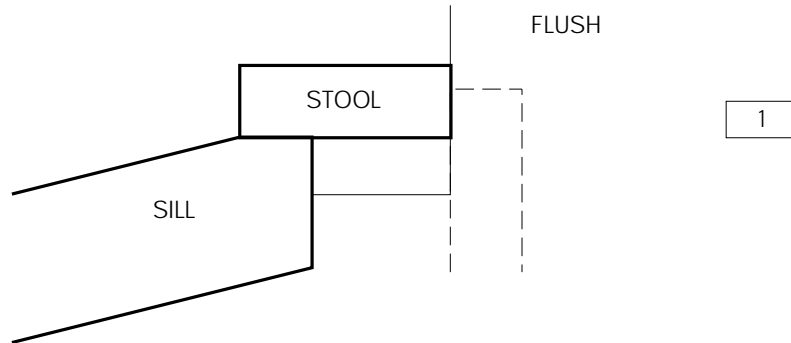
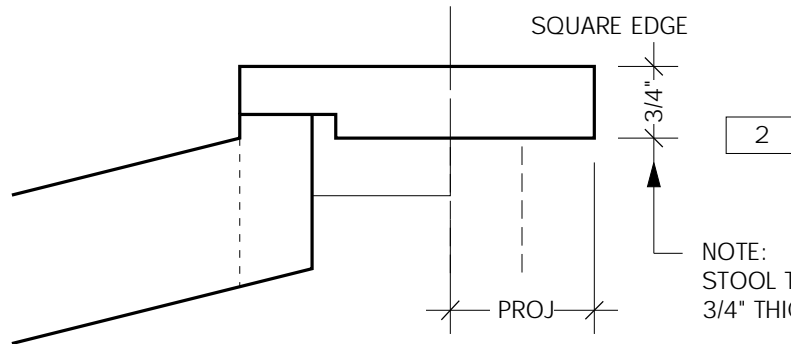
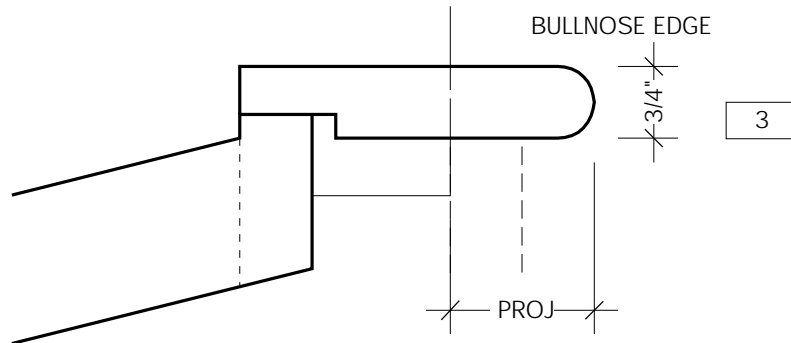
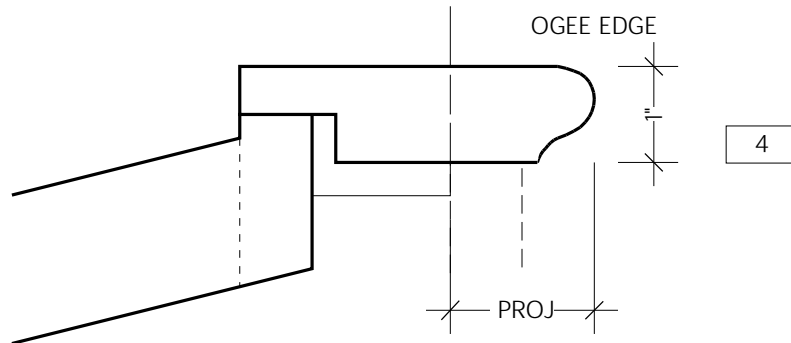
----- SHORT DASHED LINE INDICATES BY OTHERS

SASH STICKING PROFILES	1/2 FULL SIZE		7/14/04
STANDARD DETAILS	SEBASTOPOL WINDOW COMPANY	APPROVED	SHEET 2.42

DATE

SHEET

2.42



NOTE: PROJECTING STOOLS W/ HORNS ARE SUPPLIED LOOSE

NOTE:
STOOL THICKNESS MAY VARY
3/4" THICK IS TYPICAL

----- SHORT DASHED LINE INDICATES BY OTHERS

WINDOW STOOL PROFILES	1/2 FULL SIZE		7/14/04
STANDARD DETAILS	SEBASTOPOL WINDOW COMPANY	APPROVED	SHEET 2.51

SAMPLE WINDOW SPECIFICATIONS

SPECIES:

- o clear, solid, KD VG fir sash and frames
- o solid mahogany sills

FINISH:

- o primed inside and out with ZINSSER 1-2-3 Primer-Sealer

GLAZING:

- o 1/2" clear DSB dual glazing, typical, stop glazed as shown
- o BIG STRETCH acrylic caulking setting bed
 - CHOOSE AIR COLOR: BRONZE WHITE MILL

Double Hung WINDOW HARDWARE

- o BSI concealed block and tackle balances, installed

Casement WINDOW HARDWARE

- o TRUTH 4 bar stainless steel friction hinges, installed

WEATHERSTRIP

- o RESOURCE CONSERVATION TECH WS33 silicone bulb, kerf-in, installed
 - CHOOSE COLOR: BRONZE WHITE
- o SCHLEGEL QWS 320 Q-Ion leaf, kerf-in, installed
 - CHOOSE COLOR: BRONZE WHITE
- o SCHLEGEL PF 130 Polyflex leaf, kerf-in, installed
 - COLOR: TAN only

FINISH HARDWARE: (optional, by others UON)

SCREENS: (optional, TYP none UON)

- o wood frame to match other window parts
- o charcoal fiberglass screen cloth standard
- o true bronze cloth optional

SCREEN HARDWARE for CASEMENT/AWNING WINDOWS:

- o TRUTH MAXIM crank operators
- o TRUTH ENTRYGARD 1618 sash locks
 - CHOOSE COLOR: 03 BRONZE 32 WHITE
- (other TRUTH hardware colors may be available)

- o STANLEY solid brass spring bolts, 2 / screen @ top corners

SCREEN HARDWARE for DOUBLE HUNG WINDOWS:

- o (2) stainless steel pins @ top
- o STANLEY solid brass spring bolts, 2 / screen @ bottom corners

DELIVERY (OPTIONAL)

INSTALLATION BY OTHERS

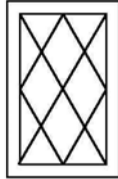
Glossary

- annealed** normal glass that is cooled so that it can be cut by scribing and snapping. By itself it is not safety glazing.
- apron** the lower member of interior window casing which is installed under a projecting stool or sill. Also sometimes used under sill projection at the exterior of frame.
- archtop** see **curved top**.
- astragal** a molding that is attached to one of the two meeting stiles to provide weather protection. Astragals can be flat or T shaped.
- awning** window where the sash opens out at the bottom (hinged at the top).
- bar** a *horizontal* glazing member of a sash. Bars run continuously from one side of a sash to the other. See **muntin**.
- bead** a decorative half-round shape along the meeting stile of a pair of casement sash. It is placed opposite the rabbeted edge to balance the appearance of the two stiles. Other millwork molding can also have **beaded** edges.
- blind stop** a stop applied to the outside edge of the jambs which holds the sash in place, typical on a double hung window. It is partly covered by the exterior casing, hence the name *blind stop*.
- bowed sash** where the sash appears curved in plan. Also known as **bent** sash. Our curved sash parts are typically sawn from solid wood. Glass can also be fabricated "bent" with the same curve.
- bronze 1)** a metal alloy of copper and tin. **2)** a color choice which is similar to dark brown. "BRONZE" color may vary between manufacturers.
- callout size (CO)** the window dimension often called out on plans or schedules. It can sometimes be the actual opening for the sash in the frame, but should always be clarified as to what it is intended to be.
- casement** a window sash that opens on hinges at one side. It can either swing out or swing in.
- casement pair** two casement sash installed in a single frame opening that meet (and usually lap) at the center. Also known as a **french casement**.
- casing** trim that is applied around the edge of the window frame and finishes the space between the wall and the window frame. There can be exterior and interior casings. It can be mitered or square cut at the corners.
- check rails** horizontal parts of double hung sash where the upper and lower sash meet. These rails usually have strips that *check* air infiltration. The profile can vary and they may or may not be weatherstripped. Most old double hung sash have *stepped* check rails.
- check stiles** vertical parts of (horizontal) sliding sash very similar to **check rails** above.
- clearance** required spaces between sash and frames for operating hardware to function properly and allow for seasonal movement. It varies depending on the hardware type and application.
- clerestory** a wall that rises above an adjoining roof and may contain windows.
- concealed** hardware that is at least partially hidden from view when completely installed.

cope the shape on the end of a sash member that is cut to mate with the shape on the sticking. It is found on the *ends* of rails, bars and muntins; whereas the sticking is found on the *edge* of these parts (and the stiles).

curved top a window where the top rail and head are built curved. The curve can be circular, elliptical or other irregular pattern. The circular head is most economical to build.

dado a rectangular groove cut *across* the grain in a piece of wood.



diamond light part of a sash where the bars and muntin run regularly diagonal instead of horizontal and vertical.

dormer a window set vertically in a wall projecting through a sloping roof. The dormer structure has a roof of its own.

double hung window with two operable sash sliding vertically in parallel tracks. The upper sash is towards the outside while the lower sash is towards the inside.

elliptical top oval shape window head, usually half-ellipse. We typically build true ellipses, not approximations because they look better.

fan light a sash with muntins radiating out from a central point at the bottom. They may or may not come together at a **hub**. Fan lights are often part of curved top sash, especially transoms.

finish opening (FO) the overall finish opening for the sash, it is also the inside measurement of a window frame where it fits tight to the sash.

finish size (FS) the actual size of sash after allowing for operating clearances.

fixed window where the sash are not operable. This is not the same as direct glazed, which has no sash at all, only glass directly glazed into a wood frame. Some fixed windows may be made to look like other types such as double hung or casement pairs.

frame size the outside measurements of a window frame.

frame the part of the window that fits into the rough opening and holds the **sash**. A window frame usually has a sloped sill.

frank to taper the edge of a tenon with a chisel allowing it to fit into a mortise.

french casement another term for **casement pair**

french door (or sash) any wood door with glass. It may be one-light or multi-light.

glass showing (daylight) the amount of clear glass between the sash members, as measured from the inside edge of the sticking. See **visible glass size**.

groove a slot cut *parallel* with the grain in a piece of wood.

head the top part of a window frame. It may actually be made up of many pieces including **stops**.

hopper window which opens in (or sometimes out) at the top, and is hinged at the bottom.

horns the projecting ends of a sill or stool that provide a place for the bottom of the side casing to end. They are measured from the *inside* of the jamb to the end of the horn.

hub a sash part where the muntin ends of a fan light converge. It is usually semicircular.

interior stop a frame part applied to the head and side jambs, creating the sash rabbet or track. It can be made with a shaped edge or square cut.

jamb the part that forms the side and top of a window frame. It is also called *side jamb* and *head jamb*.

laminated safety sheet (LSS) glass that has two pieces of annealed glass bonded to a center layer of plastic. This prevents broken glass shards from falling. It also greatly reduces ultraviolet light and sound transmission.

light (pane) 1 a piece of glass in a sash. **2** the glass opening in a sash.

low E glass a high performance glass. One of the surfaces has an almost invisible coating that increases the insulating value.

low E2 glass similar to low E glass, only higher performance (and higher cost). It increases the insulating value even more and also significantly reduces the UV light transmission.

lugs (ear or horn) an extension of the stile below the bottom rail of a double hung *upper* sash. It is usually ogee shaped and is both decorative and allows a more substantial tenon at the check rail.

meat the width of a sash member that remains after the glass rabbet(s) has been shaped away. The meat and the rabbet(s) added together make up the *net width*.

meeting rails 1 another term for check rails. **2** the horizontal parts where stack awnings overlap. They are usually rabbeted and beveled to keep out the weather. They may or may not be weatherstripped.

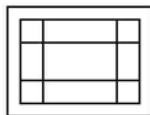
meeting stiles the vertical parts at the center of a **casement pair** (or triple) that usually overlap and are rabbeted to keep out the weather. They typically have a decorative bead on one side that helps balance the appearance of the two stiles. Multiple casement sash may instead have a **mullion** between them, especially if there are wood screens.

mill finish silver aluminum color, also called **satín**.


mortise the rectangular hole cut into the edge of a piece of wood (usually a sash part) that receives a matching **tenon** cut on the end of another piece.

mullion a vertical frame part between two sash. It can be made solid or of two jambs with a space between them.

muntin (munt or munt) *vertical* glazing member of a sash. In a multi-light sash, the muntins are discontinuous where they intersect **bars**.




nine light marginal an arrangement of lights within a sash that forms small squares at the four corners. Each square typically has 3-4 inches of **daylight** or glass showing.

ogee a molding made of two reverse curves. 

oil-rubbed bronze a premium metal finish which is a very dark brown color with a satin sheen.

outside dimension (OD) the outside frame dimension of a window frame. OD plus shim space equals the rough opening size.

ovalo a molding made of a radius and step reveal. 

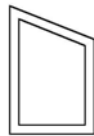
parting bead the wood piece fitted into a groove in a double hung window jamb that separates the upper and lower sash runs. It must be removable to access the upper sash.

plow (plough) the groove cut into the stile of a double hung sash to receive a sash cord. The groove has a hole bored at its lower end to hold the knotted end of the sash cord.

putty soft compound used to seal the exterior of a piece of glass. It also forms a slope away from the glass to encourage water to run off. Putty is not compatible with insulating glass.

rabbet a groove cut along the edge of a sash or a piece of wood.

rail the top and bottom horizontal parts of a sash (or door).



rake top a straight window head that is not horizontal.

RollAway screen cloth which is fitted into a metal box and rolls up and down like a window shade. There is a drawbar to operate the screen and tracks on each side.

rough opening (RO) the hole in a building wall that receives the window **frame**.

sash the part of the window that holds the glass. Sash fit into the **frame**. Sash may be fixed or operable (such as casement or double hung).

sash balance one type of operating hardware for double hung windows. It contains a spring mechanism that provides a counterbalancing force which keeps a sash up in its frame. There are different types of spring balances: duplex, spiral, block and tackle. They serve the same purpose as the sash cords, pulley and counterweights of the old double hung windows.

segmented arch a curved window head that is defined by a radius, but less than a half circle.

shim space space left between the rough opening and outside of the window frame to allow for framing inaccuracies and to install the window frame plumb and level. It may vary depending on the plans.

sill the bottom horizontal member of a window frame, usually made of redwood and sloped to encourage rain water to runoff outside the building.

sill projection part of the sill that projects beyond the outside edge of the window frame. It encourages water to run off well beyond the exterior wall surface keeping it out of the wall. Sill **horns** are usually an extension of this projection at each side of the frame.

single hung window (SH) window with two sash, top and bottom, similar to a **double hung** but only the bottom sash is operable.

slider (SL) window with two sash side-by-side where one sash slides horizontally. Although the other sash is usually fixed, it can also be built to slide. There can also be more than two sash.

spring bolt metal hardware that has spring loaded pins which mount into the stiles of screens to fix them in place. Typically made of brass.

stain grade a better grade of finish than **paint** grade. The wood is carefully selected for minimal visible defects and matching color. SWC does not recommend stain finishes on the outside surface.

step a detail that may occur as part of a sash or frame which generally increases weather protection by inhibiting air or water infiltration. Examples include stepped check rails or stepped sills.

sticking molding cut into the edge of sash parts that forms the glass rabbet. It is typically an integral part of the sash, rather than applied.

stile vertical perimeter parts of a sash. There is a left and a right stile for every rectangular or square sash.

stool horizontal part of the window **frame** that is located on the inside on top of the **sill**. Stools may be *flush* to the inside edge or *projecting* into the room.

stool projection an optional part of the stool that projects into the room, allowing the window frame to be cased differently and also making the stool wider than a flush stool.

stop a piece of wood that holds another part in place. *Glazing stops* are installed against the outside of the glass to keep it in the sash. *Frame stops* are installed against the **jamb**s to create a rabbet for the sash to rest against. Stops can either be applied or solid (cut out as part of a jamb). It depends upon the application.

tempered glass that has been heat-treated to make it stronger and resistant to breaking. When tempered glass breaks it shatters into smaller and safer pieces. Tempered glass usually has a small logo in a corner verifying that it is safety glazing.

tenon the other half of the **mortise** and tenon joint which is inserted into the mortise. This joint is recognized to be superior to others because of the large glue surface it creates.

transom a window located above another window (or door). It can be fixed or operable. If operable, it is usually as an awning or hopper type sash.

transom sill a horizontal frame member that divides the window, often between a transom and the door or sash below.

trim parts attached around the inside and outside of a window frame. It may include casing, stool, apron or other stops.

visible glass size or **VGS** the amount of clear glass between the sash members as measured from the inside edge of the sticking. See **glass showing**.

window a glazed opening in the wall of a building. It may include a **frame** with or without **sash**.

window dimension another term for labeling the **callout** size of a window unit. The exact point of measurement can vary depending on details so it must be made clear in order to build the correct size window.

Abbreviations

B/O	by others
BS	blind stop
BSI	Balance Systems Inc. (block & tackle dh balances)
CKRL	check rail (double hung)
CLR	clear
CO	callout size
CAH	clear, all heart (redwood)
DSB	double strength glass, B grade
DWG	drawing, as in shop drawing
FAS	firsts and seconds (grade of hardwood)
FO	finish opening, sash opening size
FS	finish size
GO	glass opening size
IG	insulated glass or dual glazing
KD	kiln dried (lumber)
LH	left hand
LSS	laminated safety sheet
MG	mixed grain (lumber)
MIN	minimum
NF	non-friction, as in casement hinges
OA	overall (size)
OD	outside (frame) dimension
OG	ogee (sticking)
ORB	oil-rubbed bronze
OS	old style (sticking)
PF	polyflex (weatherstrip)
PB	parting bead
PROJ	projection, as in projecting sills or stools
PT GR	paint grade
QLON	perimeter leaf weatherstrip
RCT	Resource Conservation Technology (weatherstrip company)
RH	right hand
RO	rough opening
RWD	redwood
S4S	surfaced four sides (lumber)
SGL GLZ	single glazed
SIM	similar
SSB	single strength glass, B grade
STD	standard
ST GR	stain grade
SW IN	swing in
SW OUT	swing out
(T)	tempered glass
UON	unless otherwise noted
VG	vertical grain
VGS	visible glass size (daylight)
WS	weatherstrip
XOS	expanded old style (sticking)
	solid mullion
	spaced mullion
/ or —	transom sill (intermediate sill)
BAB	bronze air bar (dark)
CAB	champagne air bar
SAB	satin air bar (silver)
WAB	white air bar